

## A TechForAg 'Ready-To-Milk' Modular Parlor

**Model: Dbl. 8 Original Germania ProTime I HerringBone - Remanufactured**

**Key Features : Conventional Exit - Automatic Indexing - All Stainless**

**Preliminary Proposal Prepared for: Website # 180 - 043015-1 (AF)**



<i>Qty</i>	<i>Units</i>	<i>Description</i>			<i>Cost to End-user</i>
16	Stalls	<b>Germania ProTime I Stalls - Remanufactured</b> - All stainless RumpRails; 45" spacing - (2) Brisket Bar Support posts per side - galvanized - <b>Conventional Exit</b> Brisket Bar - stainless - <b>New!</b> - Auto-Indexing (w/(4) 3" x 10" stainless Cylinders)			\$ 30,857

*Modules to be 54" wide with 10" Indexing System to accommodate 1,800 lbs + Cows*



**All-stainless Germania Brisket Bars**  
 Self-supporting without any additional posts (no sequence gates either). Brisket Bar in Index position

<i>Qty</i>	<i>Units</i>	<i>Description</i>			<i>Cost to End-user</i>
------------	--------------	--------------------	--	--	-------------------------



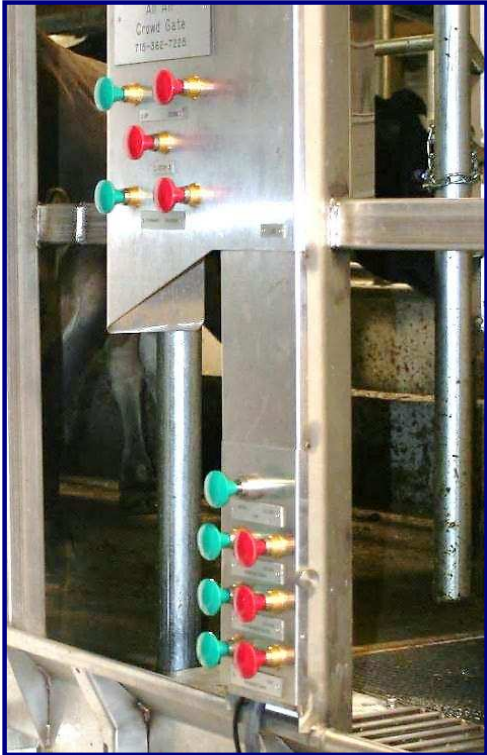
**Automated Cow Traffic Controls - Remanufactured**

- (4) 3" x 10" stainless Cylinders for Indexing
- (4) 3" x 10" stainless Cylinders for Entrance and Exit Gates
- Main Control Panel with (6) Control Buttons
- Remote Control Panel in front to reduce walking

1 Groups

*Included in Cost of Stalls*

*All-stainless TechForAg cylinders are easy to service. Just remove (4) bolts....*



**Cow Traffic Controls at last stalls on either side of parlor. Plus (2) remote panels in front.  
5-Button Crowd Gate controls on one side only. Stainless cylinders operate all Gates & Automatic Indexing**

*New Feature - Adjustable Exit Gates...*



*Freedom to put her head anywhere she likes....*



<i>Qty</i>	<i>Units</i>	<i>Description</i>			<i>Cost to End-user</i>
------------	--------------	--------------------	--	--	-------------------------



0	Stalls	<b>Stainless Curbing, Gutters and Grates - New!</b> <i>All Stainless; All-in One Welded Structure</i>			\$ -
---	--------	--	--	--	------

*All-stainless Gutter and Grates - A Heritage exclusive!*

Stainless Gutter, Curbing and Grates are one welded unit. For utmost Cow Comfort we chose 3/4" x 3/4" bars, the widest in the industry, bar none.



16	Stalls	<b>Stainless Curbing - New!</b> but no Gutters and Grates			\$ 3,429
----	--------	---	--	--	----------

0	Units	<b>15" x 10 ft x 11 ga Cross-Over Channels - New!</b> ....one at either end of pit			\$ -
---	-------	---	--	--	------

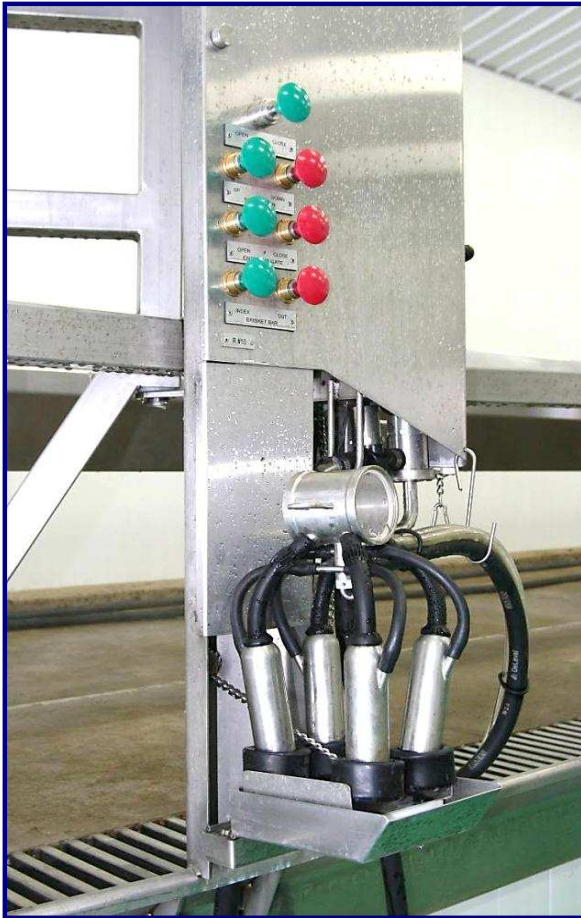
<i>Qty</i>	<i>Units</i>	<i>Description</i>			<i>Cost to End-user</i>
------------	--------------	--------------------	--	--	-------------------------

16

Units

**Air Powered CIP Cup Holders - Remanufactured**  
 Single push button operated - "Now you see them - then you don't"  
 Match Jetter Cups to Inflation - *Brand & Model #* \_\_\_\_\_

*Included in Cost of Stalls*

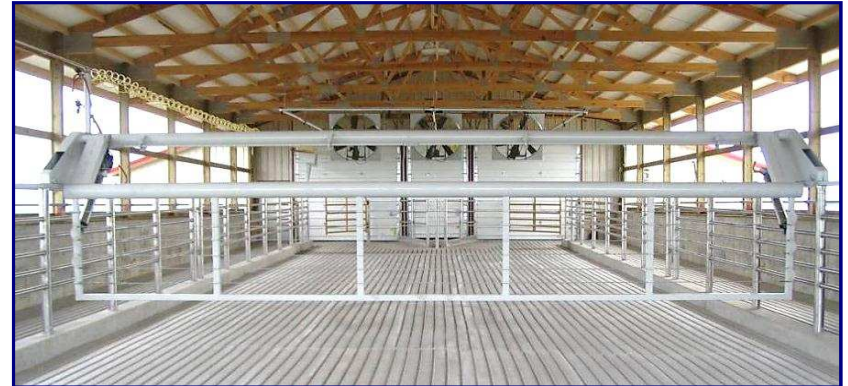


**New Style CIP Cup Holders  
 optionally available - no  
 more rubber cups**

0	Units	<p align="center"><b>Fold-Up CIP Cup Holders</b>                  (Similar to ProTime I, but manually operated)</p>			<p align="right">\$ -</p>
0	Units	<p align="center"><b>Traditional CIP Cup Holders</b>                  About \$160 less than FUCCH                  (Slide Rubber Cups into a stainless Rack)</p>			<p align="right">\$ -</p>
<i>Qty</i>	<i>Units</i>	<i>Description</i>			<i>Cost to End-user</i>



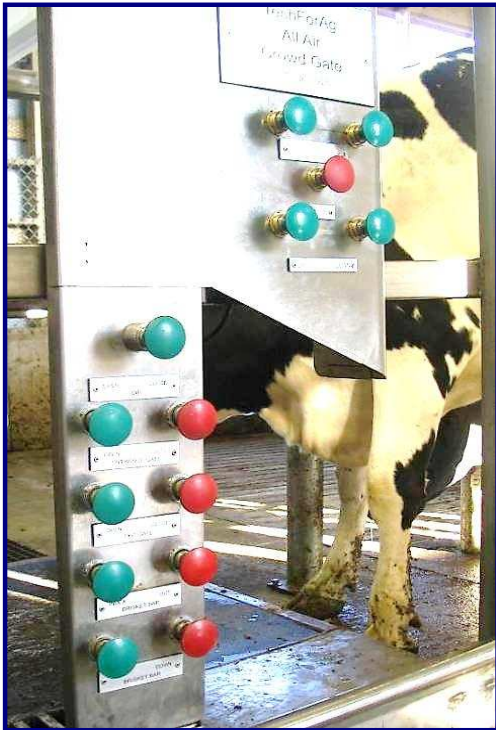
0	22ft x 50 ft	<p style="text-align: center;"><b>HERITAGE</b></p> <p><b>Heavy Duty Electrically Operated Crowd Gate - <i>New!</i></b></p> <p>Various other gates are <i>Optionally Available</i></p>			\$ -
0	ft	<p style="text-align: center;"><b>C-4 x 6.5 lbs Crowd Gate Channel</b></p> <p style="text-align: center;">(Cold galvanized)</p>			\$ -



**Heavy Duty, Germania-Style Crowd Gate; Air-Powered Gear Motor - no electric controls what-so-ever. Lifts anywhere in Holding Pen**

**For more information go to**  
[www.techforag.com/WhyCrowdGates](http://www.techforag.com/WhyCrowdGates)

<i>Qty</i>	<i>Units</i>	<i>Description</i>			<i>Cost to End-user</i>
0	ft	<p><b>Holding Pen Fence, galvanized</b></p> <p>with 3" verticals @ 5 ft on center per 20 ft section of fence; (4) 1 1/2" Pipe Horizontals @ 12" o/c</p> <p>Normally, your Contractor provides the Holding Pen Fences. We'll provide them if he doesn't want to or can't @ \$74/ft les</p>			\$ -
0	ft	<p><b>2 x 10 ft V-Lane Fences from H.P. into Parlor...</b></p> <p>@ \$74/ft less 15%</p>			\$ -
		<p><b>Three Crowd Gate Control Stations:</b></p>			<b>Cost included with Crowd Gate</b>



**Left:** Main Control station in back of parlor;

**Center:** Remote Controls in back of Holding Pen

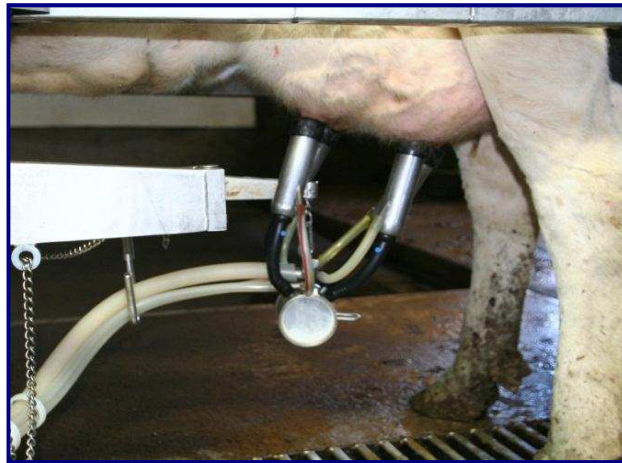
**Right:** Two extra buttons in front of parlor to reduce walking



Qty	Units	Description			Cost to End-user
16	Units	<p align="center"><b>Original Germania Model SB ArmTakeOffs - Remanufactured</b></p> <p align="center">All-Air, All-stainless, with spring-loaded clutch for arm</p> <p align="center">For more information on Arm TakeOffs go to <a href="http://www.techforag.com/AutomaticTakeOffsMain.html">http://www.techforag.com/AutomaticTakeOffsMain.html</a></p>			<p align="right">\$ 34,171</p>



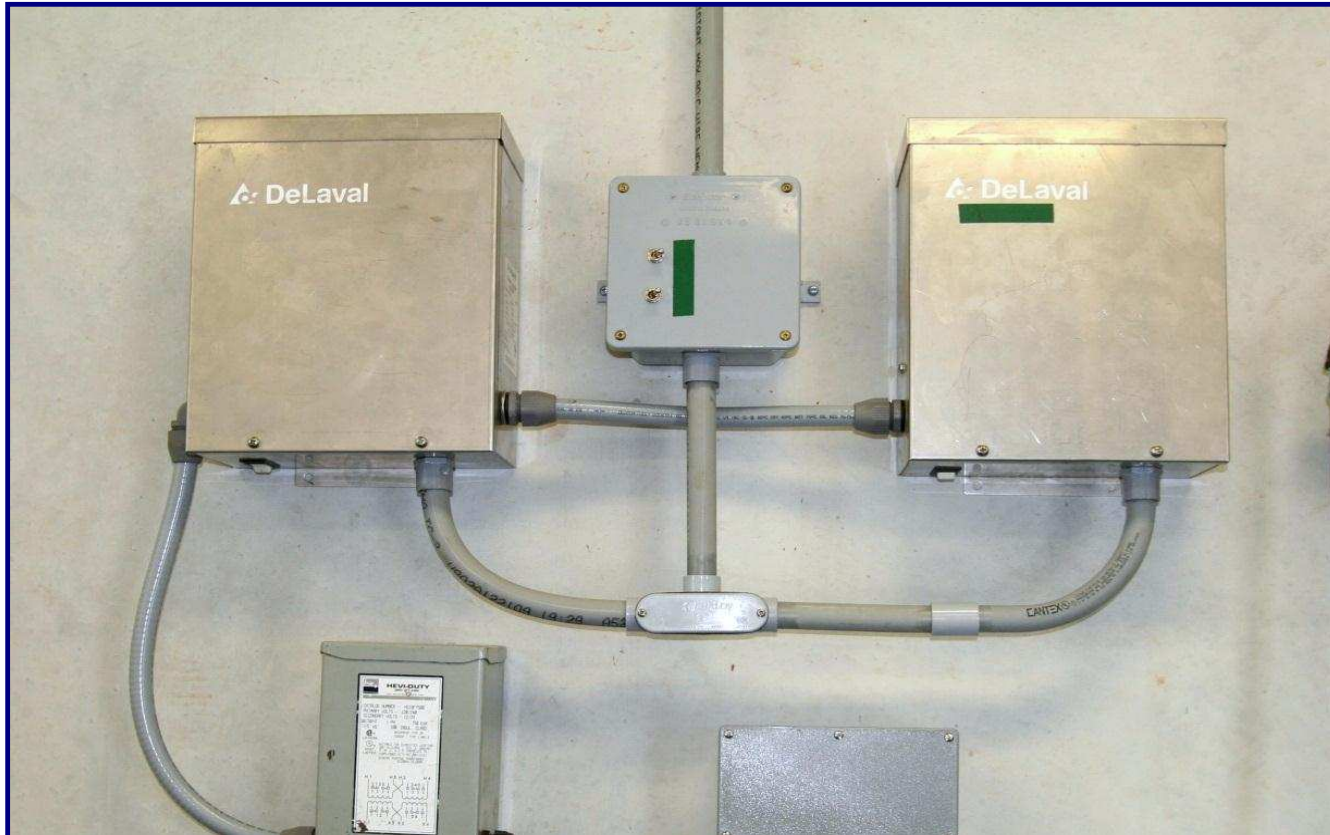
<i>Qty</i>	<i>Units</i>	<i>Description</i>			<i>Cost to End-user</i>
		<p align="center"><b>Top Outlet Claw-Clusters - Remanufactured</b></p> <ul style="list-style-type: none"> <li>- Air Forks</li> <li>- 06 Shells</li> <li>- 60" Milk Hose</li> <li>- 108" Pulsation Hose</li> <li>- Short air tubes</li> <li>- Liners of your choice: <i>Brand &amp; Model</i> _____</li> </ul> <p>(All Rubber Goods Are <b>New!</b>)</p>			
16	Units	- <b>Delatron</b> Pulsators with Bayonet quick mount - <b>if available!</b>			\$ 8,163
		<p><i>New Feature</i></p> <p><i>- Rubber Goods upgraded to All-Silicon - (Except inflations)</i></p>			



**Germania's Top Outlet Claw hangs well balanced on the arm for milking and equally so in the rest position.**



<i>Qty</i>	<i>Units</i>	<i>Description</i>			<i>Cost to End-user</i>
		<b>Pulsation System - <span style="color: red;">New!</span></b>			
16	Stalls	<ul style="list-style-type: none"> <li>- 3" PVC Pulsation line with hoses, fittings &amp; wiring harness</li> <li>- 3" PVC FreshAir line with fittings &amp; hoses</li> <li>- (2) FreshAir Filters</li> <li>- (2) 3" PVC Cross-Overs in front &amp; back</li> </ul>			\$ 1,486
		<b>- Pulsators included with Claw-Clusters</b>			
		<b>20-Unit Delatron Pulsation Controller - <span style="color: green;">Remanufactured</span></b>			
1	Units	<i>Electrician provides 120 volt receptacle nearby - bid separately!</i>			\$ 1,990



Qty	Units	Description			Cost to End-user
<p>HERITAGE CIP-Receiver Combination Group - <b>New!</b></p>					
0	Stall Equiv.	This group combines the traditional Receiver Group and the CIP System into a single pre-assembled aggregate - pre-plumbed, pre-wired and			\$ -
		26" diam. x 24/34" Receiver - which is also the Wash Vat for the CIP Cycle			
		- AW-style Moisture Trap with 3" Vac inlet & 3" U-bend			
		<ul style="list-style-type: none"> <li>'- (1) 4" x 33" Sock Milk Filters with 1 1/2" side outlet</li> <li>- (2) 1 1/2 hp Milk Pumps</li> <li>- <b>(2) Variable Speed Controller for Milk Pump, one for stand-by</b></li> </ul>			
		<ul style="list-style-type: none"> <li>- (2) LLC Probes for milk and water levels</li> <li>- 1" Input Group with hot and cold water valves + (3) chemical inputs</li> </ul>			
		<p><i>Water supply lines to Omal valves should be at least 1" diameter. Otherwise takes too long to fill receiver</i></p>			
		<p><b><i>- 1 1/2" Ball check valve with air blow-out for rest milk</i></b></p>			
		'- HERITAGE C-Model 12.5 Pipe Line Washer with (3) peristaltic chemical pumps			
		<p><i>Electrician supplies:</i></p> <ul style="list-style-type: none"> <li>- 220 Volt, <u>  X  </u> single phase to this Group</li> </ul>			
		<p><i>Plumber supplies:</i></p> <ul style="list-style-type: none"> <li>- Hot &amp; Cold water to the input group</li> <li>- Cold Water to the Plate Cooler</li> </ul>			
		<p><b><i>Includes Stand-by Milk Pump with pre-wired Twist-Lock Plugs</i></b></p>			
		<p><b><i>Also a Stand-by Variable Speed Controller, prewired as well</i></b></p>			
0	Unit	<p><b>6,000 lbs/hr Dual Pass Plate Cooler</b></p>			\$ -
					Page 12 of 33



## HERITAGE CIP-Receiver Combination Groups



**Model 1500 installed at Steve Paul's new dairy Whitewater, WI. November 2009; Dbl. 10 PT-I Expandable to dbl. 16**

<i>Qty</i>	<i>Units</i>	<i>Description</i>			<i>Cost to End-user</i>
1	Group	<p><b>Traditional Receiver Group,</b>  <b>Partially Remanufactured, partially New! incl.</b>  <b>18" Receiver, 1 1/2hp Milk Pumps with Dog House, 4" x 44" Filter,</b>  <b>Moisture Trap &amp; U-Bend, Flapper Valve, LL Probes &amp; Controller,</b>  <b>Short Plug - Long Plug, Air Blow Valve, etc.</b></p>			\$ 9,531



0	Unit	<p><b>2 hp LC-Thompson Milk Pump- New!</b></p>			\$ -
---	------	--	--	--	------

1	Group	<p><b>Automatic CIP System - New!</b>  <b>Wash Sink, Water Level Sensor, Hot &amp; Cold Water Valves</b>  <b>(1) Air Injector installed at the Receiver Group</b>  <b>2" x 2" Divert/3-Way Valve at sink,</b>  <b>Automatic Drains, etc.</b></p>			\$ 5,071
---	-------	--	--	--	----------

1	Unit	<p><b>Heritage PipeLine Washer Model 12.5</b></p>			\$ 4,999
---	------	---	--	--	----------



<i>Qty</i>	<i>Units</i>	<i>Description</i>			<i>Cost to End-user</i>
16	Stalls	<p align="center"><b>3" Lo- Lines - Remanufactured</b></p> <p>Double slope, single loop, with nipples, fittings, all clamps, gaskets and brackets.</p>			\$ 1,486



16	Stalls	<p align="center"><b>2" CIP Line - Remanufactured</b></p> <p>- with nipples, fittings, all clamps, gaskets &amp; brackets. - Both lines will be dead-ended at back of parlor</p>			\$ 1,486
----	--------	--	--	--	----------

60	ft	<p align="center"><b>1 1/2" Discharge line - New!</b></p> <p>from CIP-Receiver Group to Milk Tank (Bottom Loading) and back to CIP Rec Group; incl. Safety Switch at Tank</p>			\$ 2,143
----	----	---	--	--	----------

<i>Qty</i>	<i>Units</i>	<i>Description</i>			<i>Cost to End-user</i>
0	Unit	<b>Calf Milk Dispenser</b> Collect warm milk at any time			\$ -



**Works only in combination  
with our CIP-Receiver  
Group**



<i>Qty</i>	<i>Units</i>	<i>Description</i>			<i>Cost to End-user</i>
1	Group	<b>Compressed Air System - <i>New!</i></b> - (1) 5 hp SpeedAir Compressor - With Twin Tower Drier, dries air to - 10 dgr			\$ 7,844
		<i>Electrician provides 220V to this group ___single or ___3 Phase?</i>			



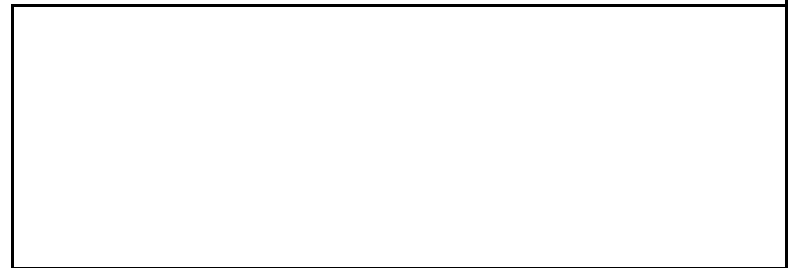
*(2) 5 hp Speedair Compressors , modularized;*



*Twin Tower Drier dries air to minus 10 dgr*

**Price includes all Filters & Regulators as well as copper lines to all stations.**

<i>Qty</i>	<i>Units</i>	<i>Description</i>		<i>Cost to End-user</i>
1	Unit	<b>7.5 Hp Vacuum System with Lobe-Style Pump</b> <b>Time already has a 7.5 hp SutorBuillt Pump</b>		\$ 5,250
1	Unit	<b>Frequency Controller/Variable Speed Drive - <b>New!</b></b>		\$ 3,071
1	Group	<i>4" PVC Header Lines with 3" lines to Pulsation and Receiver Group;</i> <i>Also includes Pre-Filter, Check Valve, Test Port, Safety Valve, Slide Valve, Drains.</i>		\$ 1,071
0	Unit	<b>Sentinel Model 350 Vacuum Regulator</b>		\$ -
		<i>Electrician provides 220 volt to this Group - Bid separately! ___single or ___3 phase?</i>		





<i>Qty</i>	<i>Units</i>	<i>Description</i>			<i>Cost to End-user</i>
0	sqft	<b>Stainless Covering for Pit Wall and/or Parlor Walls</b> 4 ft x 10 ft x 16 ga sheets, # 4 polish			\$ -



<i>Qty</i>	<i>Units</i>	<i>Description</i>			<i>Cost to End-user</i>
0	Units	<p align="center"><b>4 ft x 4 ft stainless Divert Gate</b>  <b>Built from 2 1/2 x 2 1/2 x 11 ga square tubing</b>  <b>Divert exiting cows into a catch pen.</b></p>			\$ -
0	Group	<p align="center"><b>Cylinders for the Divert Gates</b></p> <p>3" x 14" Stainless cylinders w/EV-125 Quick Exhaust Valves  (4) Versa 'Open' &amp; 'Close' Push Buttons</p>			\$ -





<i>Qty</i>	<i>Units</i>	<i>Description</i>			<i>Cost to End-user</i>
		<b>On-Farm Spare Parts Kit</b> <b>(Contains only new parts)</b>			
1	Group	Includes all essential parts for at least (1) year of operation (6) sensors, (2) retract cylinder, at least (4) of each air valves, an extra LLC, seal kits for the milk pump, (2) PC Boards for the Pipe Line Washer, several extra Pulsator, an extra Cluster Assy', etc.			\$ 3,571

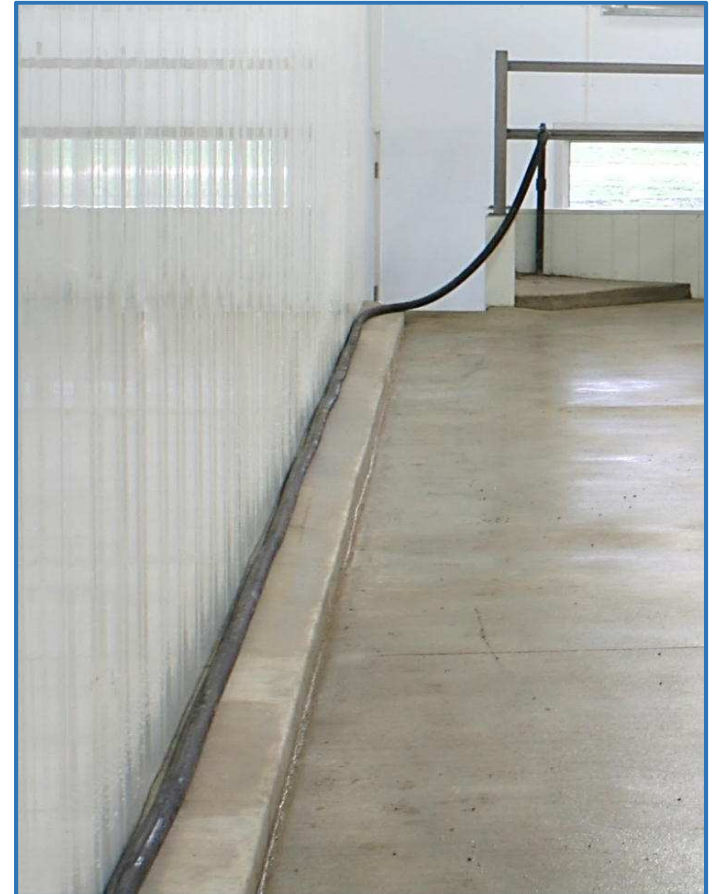
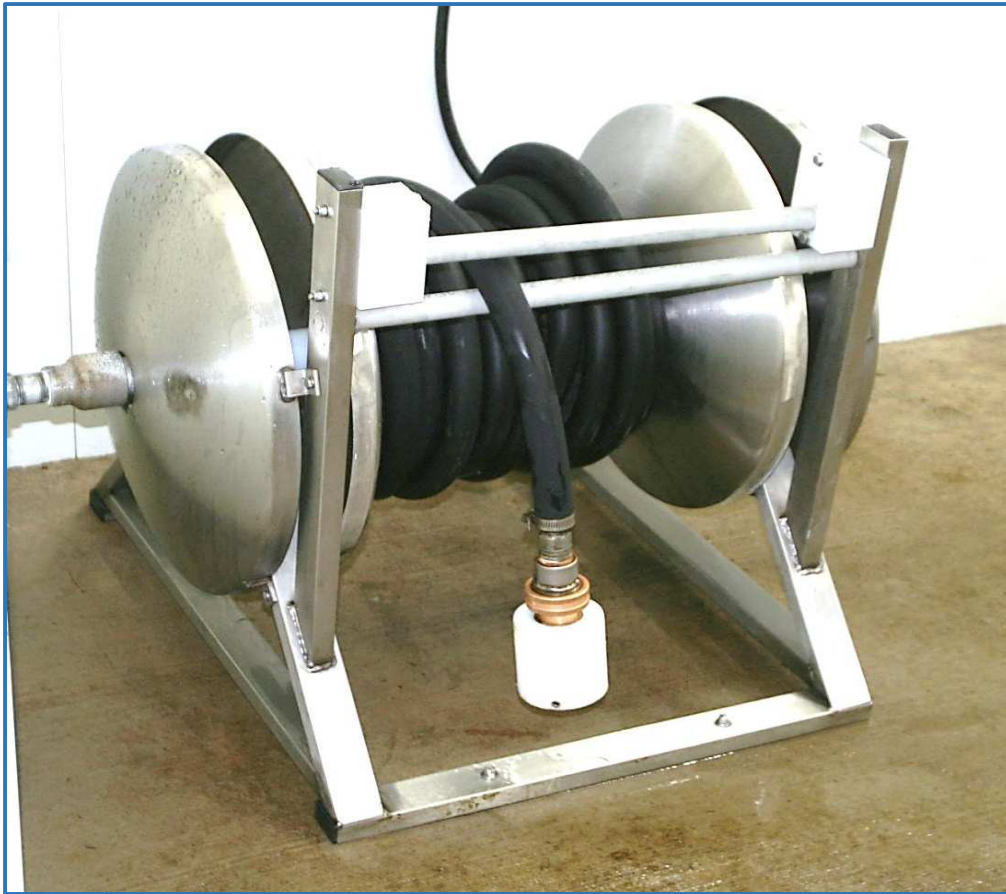


<i>Qty</i>	<i>Units</i>	<i>Description</i>			<i>Cost to End-user</i>
0	Pcs	<b>Double Compartment Sink - New!</b>			\$ -
0	Group	<b>Accessories Group - New!</b> Hand Wash Sink, Filter Sock Holder with (1) box of Filters, SST paper towel holder, SST soap dispenser, etc.			\$ -





<i>Qty</i>	<i>Units</i>	<i>Description</i>			<i>Cost to End-user</i>
1	Group	(2) 45 ft long 1" Wash-Down Hose - <b>New!</b>			\$ 488
1	Group	(1) 25 ft long 1" Wash-Down Hose for the pit - <b>New!</b>			\$ 179
0	Units	Air-Powered, all-stainless Hose Reel for the (3) Wash-Down Hoses			\$ -





Qty	Units	Description			Cost to End-user
0	sqft	<b>Pit Mats for the Milkers - New!</b>			\$ -

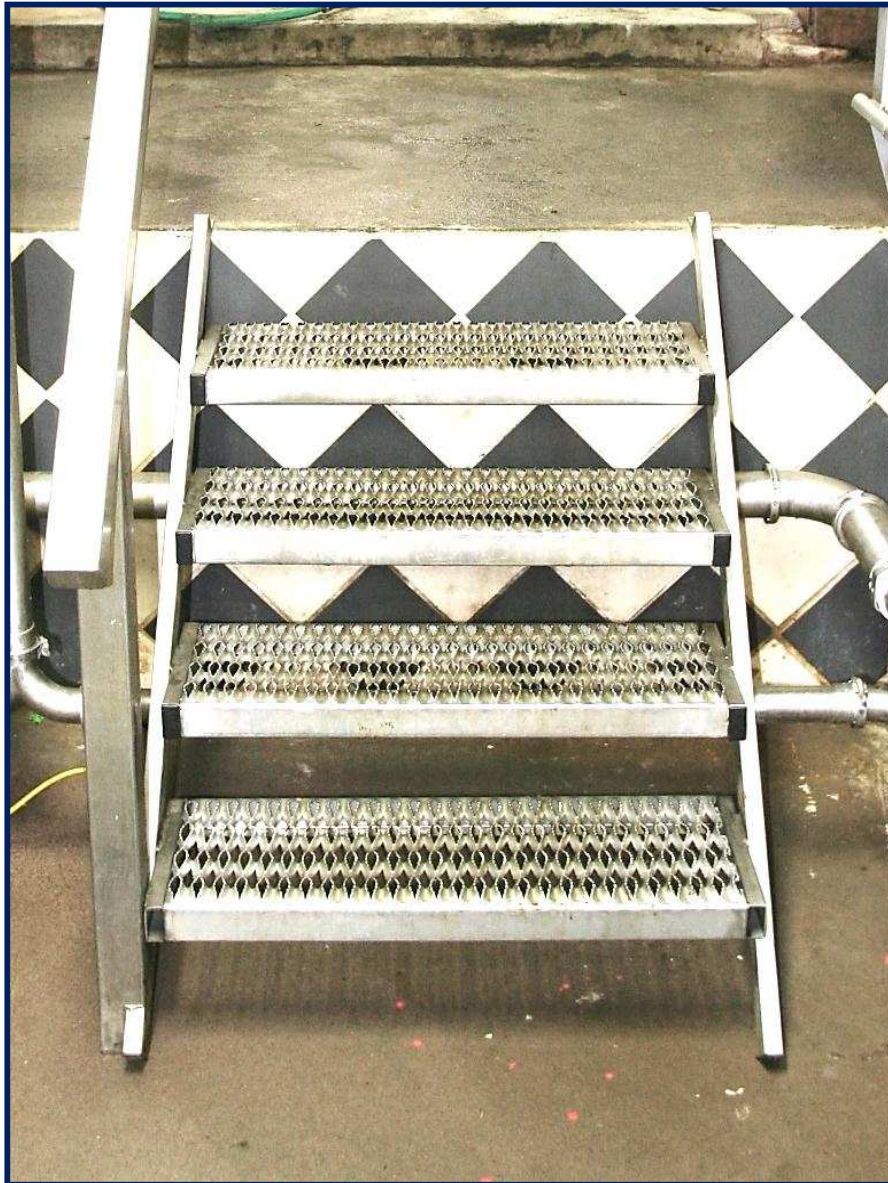




<i>Qty</i>	<i>Units</i>	<i>Description</i>			<i>Cost to End-user</i>
0	sqft	<p><b>Adjustable Pit Floor</b>  <b>...adjusts floor height by 8" up or down</b></p>			\$ -
		<p><i>Floors raises and lowers by air pressure</i>  <i>no motors, no switches</i>  <i>Cost - about \$55/sqft</i></p>			



<i>Qty</i>	<i>Units</i>	<i>Description</i>			<i>Cost to End-user</i>
1	Unit	<p style="text-align: center;"><b>Stainless Pit Steps - <span style="color: red;">New!</span></b>  <b>from parlor into Holding Pen; 4 steps, 36" wide, 8" riser</b>  <b>with SST Handrail .</b></p>		\$	<b>857</b>





<i>Qty</i>	<i>Units</i>	<i>Description</i>		<i>Cost to End-user</i>
8	Sets	<p><b>Lights for the Milker Pit</b>            Basically a set of (2) stainless brackets to mount Fluorescent Light Fixtures</p>		\$ 549
		<i>96" Fluorescent Light Fixtures should be vapor tight and 100% corrosion resistant</i>		
		<i>We install the brackets on site;  <b>Electrician supplies and installs the fixtures</b></i>		
		<i>This parlor would need (4) 8ft fixtures per side</i>		



<i>Qty</i>	<i>Units</i>	<i>Description</i>			<i>Cost to End-user</i>
<b>0</b>	<b>Units</b>	<b>AccuWeigh Milk Measuring System</b> <b>Remanufactured</b> <b>(Change Low-Line!)</b>			\$ -



		<b>Germania Accuweigh 90 or 65</b> <ul style="list-style-type: none"> <li>- Hold all of the milk for quick check before letting the cows go</li> <li>- Drain and re-vacuumize automatically when cows leave</li> <li>- Provide great vacuum reserve right next to the cow</li> </ul>			
<b>0</b>	<b>Group</b>	<b>AW Control Boxes</b> <b>Turbo Controller, ____ Extra VacShutOff Valves, etc.</b>			\$ Page 28 of 33 -
<b>0</b>	<b>Units</b>	<b>Butter Fat Testers</b>			\$ -



<i>Qty</i>	<i>Units</i>	<i>Description</i>			<i>Cost to End-user</i>
0	Unit	<b>Stainless Breezeway Fences with 3ft 'Side Wing'</b>			\$ -



0	ft	<b>Stainless Cap for Breezeway Wall</b>			\$ -
---	----	---	--	--	------





<i>Qty</i>	<i>Units</i>	<i>Description</i>			<i>Cost to End-user</i>
0	Stalls	1" Kraiburn Rubber Mats (Made in Germany) - <b>New!</b> For the Cow Platforms			\$ -





<i>Qty</i>	<i>Units</i>	<i>Description</i>			<i>Cost to End-user</i>
		<b>Modular Platforms for 8 stalls each</b> <i>Stainless</i>			
		The structural bases of the Modules; Height of your concrete cow platform should be 34" - if you are comfortable with a 38" working height - <b>To be discussed!</b>			
2	Units				\$ 3,429



We build our parlor modules on platforms, a frame work made form 2" x 4" stainless tubing and usually 53" wide x 50 ft long for the typical dbl. 12. Normally, we slide the Modules into place on this steel frame work, pushed by a Skid Loader.

## Summary Page

	<b>Sub-Total Materials</b>	\$	<b>127,691</b>
	<b>15% Factory-Direct Discount</b>	\$	<b>(19,154)</b>
	<b>Pre-Installation Labor and Supplies</b> provided by TechForAg at it's factory to convert the above materials into a <i>Ready-To-Milk</i> Modular Parlor; <i>Calculated at 14% of Cost of Materials</i>	\$	<b>17,877</b>
2	<b>Freight from Rhinelander to SE Wisconsin</b> <b>Trucks @ \$3.45/mile/Truck for 250 miles</b>	\$	<b>1,725</b>
	<b>On-Site Installation Labor, Supplies &amp; Expenses</b> Covers several items:		
	1. Time for (2) Parlor Specialists @ (9) days @ 12 hrs @ \$65 hr	\$	<b>14,040</b>
	2. Time value of (2) Parlor Specialists while travelling: (2) trips @ 12 hrs @ \$35/hr	\$	-
	Travel Expenses: (2) 500 mile trips +Motels + Meals & Misc.	\$	-
	3. Visits to dairy for Planning & General Consultation by Rolf for Quality Control and Training	\$	-
	4. Rebate to Customer of \$1,000 for prompt payment of last installment		
	6. Warranty work & follow-up visits		
	<b>Grand Total I</b> <b>Parlor with Freight &amp; Installation</b>	\$	<b>142,179</b>
	<b>Per Stall</b>	\$	<b>8,886</b>



## ***Terms - I***

***If production at TFA starts several months in the future***

- 1) 15% down at signing of contract**
- 2) 25% on start of production**
- 3) 55% on delivery of parlor to the dairy**
- 4) 5% On start-up of milking**
- 5) \$1,000 Rebate for prompt payment**

## ***Terms - II***

***If production at TFA starts more or less immediately***

- 1) 35% at signing of contract, plus**
- 2) 60% on delivery of parlor to the dairy**
- 3) 5% on Start-up of Milking**
- 4) \$1,000 Rebate for prompt payment**

### ***Please Note***

**18 Months warranty on all materials. Does not apply to the Compressed Air Group and the Vacuum Group, for which we pass on the manufacturer's warranty  
Warranty starts *after* parlor has been paid for in full**