

A TechForAg 'Ready-To-Milk' Modular Parlor

Model: Dbl. 16 Original Germania ProTime I HerringBone - Remanufactured

Key Features: Rapid Exit - Automatic Indexing - All Stainless - With AccuWeighs

Prepared For: Website Parlor # 114 - Preliminary Proposal # 012215-1 (A.F.)



<i>Qty</i>	<i>Units</i>	<i>Description</i>		<i>Cost to End-user</i>
32	Stalls	<p>Original Germania ProTime I Stalls - Rapid Exit Remanufactured</p> <ul style="list-style-type: none"> - All stainless RumpRails; 45" spacing - (3) Support posts per side - <i>Rapid Exit</i> Brisket Bar - New! stainless 		\$ 66,286

1st Stall Group together with Exit Gate to be removable for easy expansion later on

Modules to be 53" wide with 12" Indexing System to accommodate 1,800 lbs + Cows



All-stainless Germania Brisket Bars. Up to dbl. 18 self-supporting with only a single post in the center. Therefore, no posts for the cows to walk around and no posts for you to clean around.

If one of them goes down from milk fever you can easily get to her with the skid loader.

Left: Dbl. 10 Brisket Bar in indexed position.

Right: Brisket Bar in Rapid Exit position

Qty	Units	Description			Cost to End-user
1	Group	<p align="center">Automated Cow Traffic Controls - New!</p> <ul style="list-style-type: none"> - (6) 3" x 10" stainless Cylinders for Indexing - (4) 3" x 10" stainless Cylinders for Entrance & Exit Gates - Exit Gates adjustable for different size cows - <i>New Feature! See below</i> 			Included with Stalls



*New in 2010: LowProfile Exit Gate - She'll put her head anywhere she likes.
Plus - Gate is adjustable for different size cows*

<i>Qty</i>	<i>Units</i>	<i>Description</i>			<i>Cost to End-user</i>
32	Stalls	<p style="text-align: center;">Stainless Gutter and Curb - New!</p> Grates are original Germania galvanized; All-in One Welded Structure			\$ 19,657



<i>Qty</i>	<i>Units</i>	<i>Description</i>			<i>Cost to End-user</i>
3	Units	15" x 11 ft x 11 ga Cross-Over Channels - New! (2) at either end of pit and (1) from Machine Room wall to parlor			\$ 3,893
32	Units	Air Powered CIP Jetter Cup Holders - Remanufactured Single push button operated - "Now you see them - then you don't" Match Jetter Cups to Inflation - <i>Brand & Model #</i> _____			Cost included in price of Stalls



Automated Jetter Cup Holders ...open for wash-up

and closed for milking

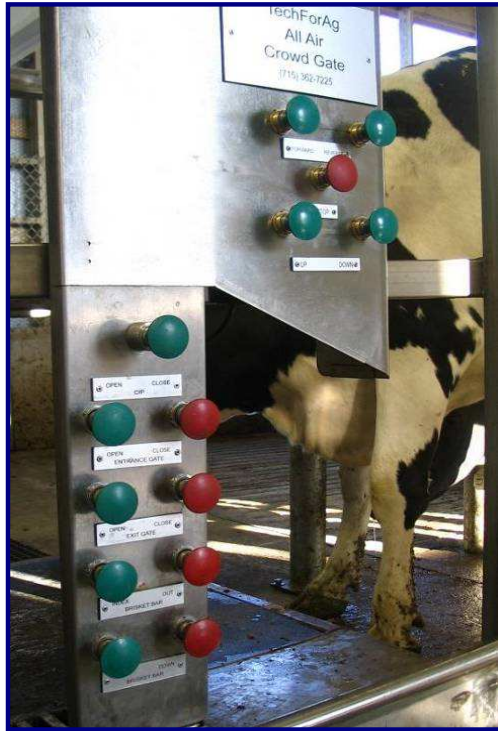
Optionally Available- New-style Cup Holders. No more Rubber Cups to replace

<i>Qty</i>	<i>Units</i>	<i>Description</i>		<i>Cost to End-user</i>
1	30 ft x 70 ft	<p>Heavy Duty All-Air Operated Germania Crowd Gate Remanufactured (AF)</p> <ul style="list-style-type: none"> - Starts automatically with 'Brisket Bar Up' - stops after 30 sec - Stops automatically at top and bottom of Holding Pen - 7" diam. Wheels; <i>Exact Length and width to be discussed</i> 		\$ 12,250
150	ft	<p>C-4 x Crowd Gate Channel - New! Welds very straight over 6 ft Span/Distance between Vertical Posts - Does not require any other re-enforcement or support; cold galvanized</p>		\$ 2,143



Heavy Duty, Germania Crowd Gate; Air-Powered Gear Motor - no electric controls what-so-ever. Lifts anywhere in Holding Pen and returns overhead cows to rear of pen. Air Motor shuts off automatically, both in front and back. *Center-mounted Drive Unit*

<i>Qty</i>	<i>Units</i>	<i>Description</i>			<i>Cost to End-user</i>
0	ft	<p>Holding Pen Fence, galvanized</p> <p>with 3" verticals @ 5 ft on center per 20 ft section of fence; (4) 1 1/2" Pipe Horizontals @ 12" o/c</p> <p>Normally, your Contractor provides the Holding Pen Fences. We'll provide them if he doesn't want to or can't @ \$74/ft les</p>			\$ -
0	ft	<p>2 x 10 ft V-Lane Fences from H.P. into Parlor...</p> <p>@ \$74/ft less 15%</p>			\$ -
		<p><i>Three Crowd Gate Control Stations:</i></p>			Cost included with Crowd Gate



Left: Main Control station in back of parlor;

Center: Remote Controls in back of Holding Pen

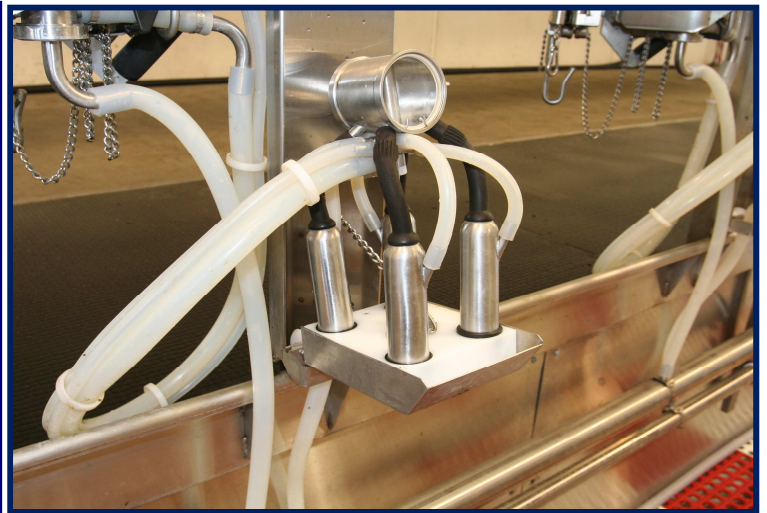
Right: Two extra buttons in front of parlor to reduce walking

<i>Qty</i>	<i>Units</i>	<i>Description</i>			<i>Cost to End-user</i>
		Germania Model SB Arm TakeOffs - Remanufactured All-Air, All-stainless, with spring-loaded clutch assembly for arm			
32	Units				\$ 68,343

Germ
ania



<i>Qty</i>	<i>Units</i>	<i>Description</i>			<i>Cost to End-user</i>
32	Units	<p style="text-align: center;">Germania</p> <p style="text-align: center;">Top Outlet Claw-Clusters - Remanufactured</p> <ul style="list-style-type: none"> - Air Forks - 06 Shells - 60" Milk Hose - 108" Pulsation Hose - Short air tubes - Liners of your choice: <i>Brand & Model</i> _____ - with Strangko Pulsators 			\$ 11,840
		<p><i>New Feature in 2014 -</i></p> <p><i>- All-New Rubber Goods; upgraded to Silicon - (Except inflations)</i></p>			



HERITAGE Top Outlet Claw hangs well balanced on the arm for milking and equally so in the rest position.
All-stainless body makes for minimal maintenance - No plastic nipples to break.

<i>Qty</i>	<i>Units</i>	<i>Description</i>			<i>Cost to End-user</i>
		Pulsation System			
32	Stalls	<ul style="list-style-type: none"> - 3" PVC Pulsation line with hoses, fittings & wiring harness - 3" PVC FreshAir line with fittings & hoses - (4) FreshAir Filters - (2) 3" PVC Cross-Overs in front & back 			\$ 1,600
		- Pulsators included with Claw-Clusters			
		24-Unit StrangKo Pulsation Controllers			
3	Units	<p style="text-align: center;">One of which will be new</p> <p><i>Electrician provides 120 volt receptacle nearby - bid separately!</i></p>			\$ 3,571
		<i>3rd Controller prewired with plugs for instant change-over. No tools required.</i>			



<i>Qty</i>	<i>Units</i>	<i>Description</i>		<i>Cost to End-user</i>
CIP-Receiver Combination Group - Partially New!				
32	Stall Equiv.	This group combines the traditional Receiver Group and the CIP System into a single pre-assembled aggregate - pre-plumbed, pre-wired and palletized		\$ 27,200
		26" diam. x 24/34" Receiver - which is also the Wash Vat for the CIP Cycle (Nominal Capacity of 80 gl. - Dbl. 16 estimated to use 55 or 65 gl/fill)		
		- AW-style Moisture Trap with 3" Vac inlet & 3" U-bend		
		'- (1) 4" x 33" Sock Milk Filters with 1 1/2" side outlet - 3 hp Milk Pump - Variable Speed Controller for Milk Pump		
		- (2) LLC Probes for milk and water levels - 1" Input Group with hot and cold water valves + (3) chemical inputs		
		<i>Water supply lines to Omal valves should be at least 1 1/4" diameter. Otherwise takes too long to fill receiver</i>		
		<i>- 1 1/2" Ball check valve with air blow-out for rest milk</i>		
		'- HERITAGE C-12.5 Pipe Line Washer with automatic Chemical Injection - All MAC Interface Valves and Relays		
		<i>Electrician supplies:</i> - 220 Volt, _____single phase to this Group		
		<i>Plumber s upplies:</i> - Hot & Cold water to the input group - Cold Water to the Plate Cooler		
		<i>Includes Stand-by Milk Pump with pre-wired Twist-Lock Plugs</i>		
		<i>Also a Stand-by Variable Speed Controller, prewired as well</i>		
0	Unit	6,500 lbs/hr Dual Pass Plate Cooler - New!		\$ -
2	Units	2" x 2" 3-Way Valves for AW Control		\$ 1,857

HERITAGE CIP-Receiver Combination Groups



Model 1500 to be installed at Steve Paul's new dairy near Whitewater, WI. as part of a dbl. 10 ProTime I, exp to dbl. 16

Includes Lock-out Switch at Milk Tank - PipeLine Washer will not switch to 'Milk' until discharge line is connected to Milk Tank

<i>Qty</i>	<i>Units</i>	<i>Description</i>			<i>Cost to End-user</i>
170	ft	<p align="center">2" Milk Transport Line - Remanufactured</p> <p>(2) Dead-ended, double slope Lo-line, with nipples, fittings, all clamps, gaskets and brackets.</p>			\$ 3,643




160	ft	<p align="center">2" CIP Line</p> <p>- with nipples, fittings, all clamps, gaskets & brackets. - Lines will be dead-ended at front of parlor - includes Sweep Y at Culvert</p>			\$ 1,745
-----	----	---	--	--	----------

80	ft	<p align="center">1 1/2" Discharge line - New!</p> <p>from CIP-Receiver Group to Milk Tank (Bottom Loading) and back to CIP Rec. Group; incl. Special Adapter and Safety Switch at Milk Tank, i.e. entire parlor is deactivated until you connect the discharge line to the tank</p>			\$ 2,857
----	----	---	--	--	----------

<i>Qty</i>	<i>Units</i>	<i>Description</i>			<i>Cost to End-user</i>
1	Group	<p align="center"><i>New Feature in 2009</i></p> <p align="center">Calf Milk Dispenser - Collect Warm Milk at Any Time (Can also be installed to collect calf milk outside milk house)</p>			<p align="center">Cost included with Discharge Line</p>



<i>Qty</i>	<i>Units</i>	<i>Description</i>			<i>Cost to End-user</i>
11	ft	<p>(2) 66" Stainless Curb Extensions in Front - New!</p> <p>from Exit Gate to Breezeway Wall. Prevents manure from running into the pit; Includes concrete guard. These will be a permanent part of the parlor.</p>			\$ 471
					
0	ft	<p>(2) 15-ft Light-Duty Curb Extensions (These will become obsolete when you expand to dbl. 16)</p>			\$ -
0	ft	<p>(2) 8 ft Temporary Fences to keep cows from wandering around the front of the parlor</p>			\$ -
					Page 15 of 31

<i>Qty</i>	<i>Units</i>	<i>Description</i>			<i>Cost to End-user</i>
1	Group	<p align="center">Compressed Air System - Remanufactured (RL)</p> <p>- (2) 7.5 hp Ingersol Rand T-30 Compressor - With Twin Tower Drier, dries air to -10 dgr F</p>		\$	4,375



<i>Qty</i>	<i>Units</i>	<i>Description</i>		<i>Cost to End-user</i>
1	Unit	20 Hp Vacuum System with Kaeser Lobe-Style Pump (AF) Includes Frequency Controller/Variable Speed Drive (?)		\$ 3,906
80	ft	<i>6" PVC Header Lines with 3" lines and fittings to Pulsation and Receiver Group, plus Pre-filter, Slide Valve, Check Valve, Safety Valve, Test Port, Clean-out Port, etc.</i>		\$ 1,150

Electrician provides 220 volt single phase to this Group - Bid separately! ___single or ___3 phase?



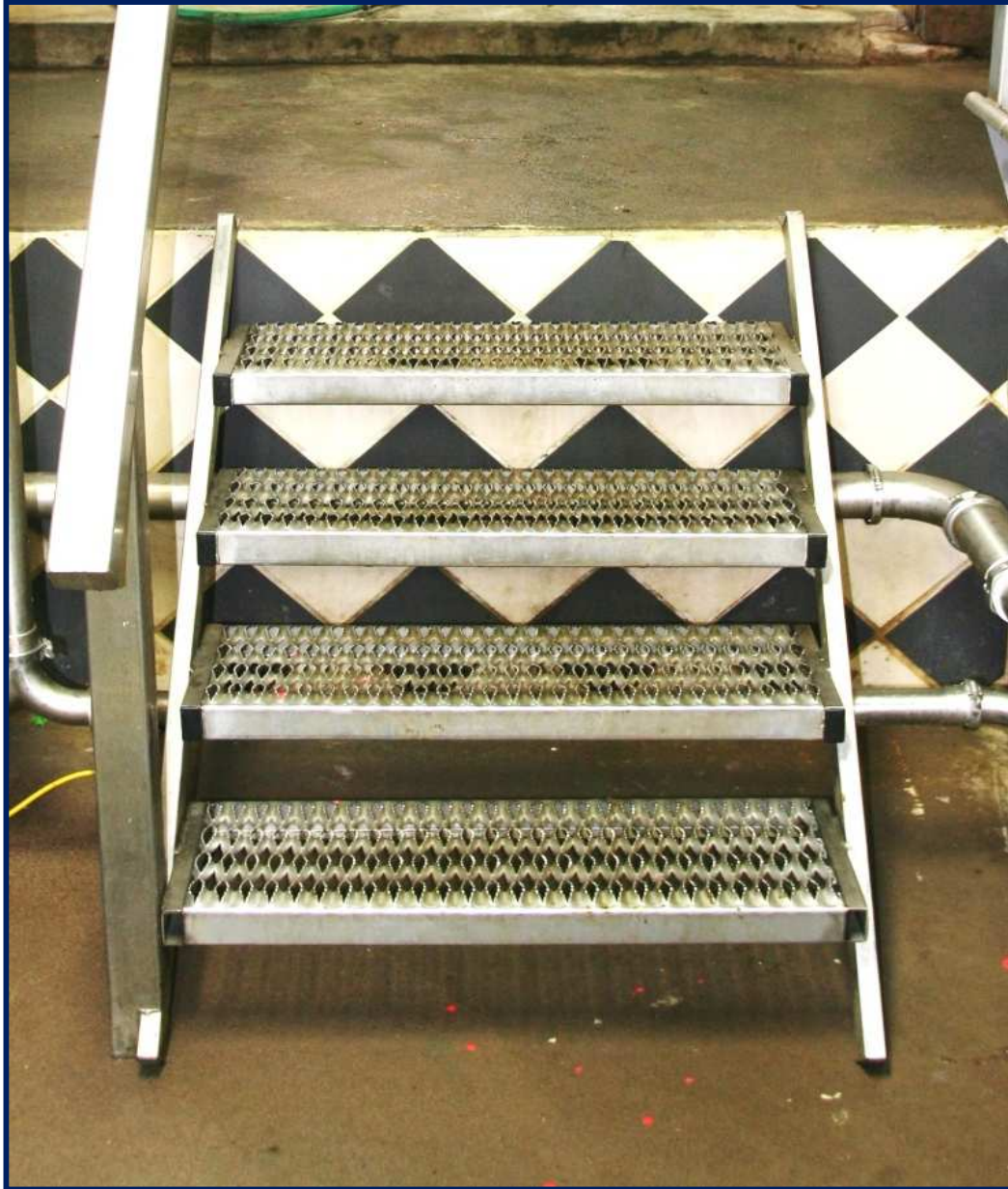
6" Header Line supplies CIP Receiver Group and Pulsation System

**Customer provides own Stand-by Vacuum Pump
TechForAg moves this pump into Machine Room
and provides 3" PVC to connect it into the 6"
Header lines - included in price of PVC Vacuum
System**

<i>Qty</i>	<i>Units</i>	<i>Description</i>			<i>Cost to End-user</i>
0	ft	<p align="center">Stainless Wall Panels</p> <p align="center">4 ft x 10 ft x 16 ga sheets, # 4 polish</p>			\$ -
0	Groups	<p align="center">Divert Gate Actuators & Controls</p> <p>3" x 14" Stainless cylinders w/EV-125 Quick Exhaust Valves, Versa 'Open' & 'Close' Push Buttons</p>			\$ -
0	Units	<p align="center">4 ft x 4 ft stainless Divert Gate</p> <p align="center">Built from 2 1/2 x 2 1/2 x 11 ga square tubing Divert exiting cows into a catch pen.</p>			\$ -
1	Group	<p align="center">On-Farm Spare Parts Kit - New!</p> <p>Includes all essential parts for at least (1) year of operation (4) sensors, a retract cylinder, at least (1) of each air valves, an extra LLC, seal kit for the milk pump, PC Board for the PL Washer, an extra Pulsator, etc.</p>			\$ 4,643
1	Pcs	<p align="center">Double Compartment Sink</p>			\$ 643
1	Group	<p align="center">Accessories Group</p> <p>Hand Wash Sink, Filter Sock Holder with (1) box of Filters, SST paper towel holder, soap dispenser, SST bracket for wash-down hose, etc.</p>			\$ 536
					Page 18 of 31

<i>Qty</i>	<i>Units</i>	<i>Description</i>		<i>Cost to End-user</i>
160	ft	(2) 80 ft long ft long 1 1/4" Wash-Down Hose - New! with original Brass Fire-Hose Nozzles		\$ 1,829
40	ft	(1) 40 ft 1" hose for Milker's Pit - New!		\$ 343
	Units	Air-Powered, all-stainless Hose Reel - New! for (2) Wash-Down Hoses (Hose Reel does not work in the Pit)		\$ -
0	squ ft	Pit Mats for 8 ft wide x 60 ft long pit floor - New! Color of your choice - Blue or green		\$ -
		<i>Eliminate the Middleman! You could possibly save \$1,000 on these Mats if you were to buy them directly from our supplier - to be discussed</i>		

<i>Qty</i>	<i>Units</i>	<i>Description</i>			<i>Cost to End-user</i>
1	Unit	<i>Stainless Pit Steps - New!</i> from parlor into Holding Pen; 4 steps - 30" wide			\$ 857



<i>Qty</i>	<i>Units</i>	<i>Description</i>			<i>Cost to End-user</i>
2	Unit	<p align="center">Stainless Breezeway Fence with 3ft 'Side Wing'</p> <ul style="list-style-type: none"> - Made from 2.5" x 2.5" square stainless tubing - 8 ft + 3 ft long, with - (2) Horizontals and - (4) 3 ft Verticals 			\$ 429



<i>Qty</i>	<i>Units</i>	<i>Description</i>			<i>Cost to End-user</i>
0	Stalls	1" Rubber Mats For the Cow Platforms - New!			\$ -
		<i>Eliminate the Middleman! You could possibly save \$1,000 on these Mats if you were to buy them directly from our supplier - to be discussed</i>			



<i>Qty</i>	<i>Units</i>	<i>Description</i>		<i>Cost to End-user</i>
32	Units	AW 65 (or - 90) lbs Milk Measuring Containers Remanufactured with 2" Vacuum Wash Line, (2) AW Control Boxes		\$ 22,629



Germania Accuweigh 65

- Hold all of the milk for quick check before letting the cows go
- Drain and re-vacuumize automatically when cows leave
- Provide great vacuum reserve right next to the cow

<i>Qty</i>	<i>Units</i>	<i>Description</i>			<i>Cost to End-user</i>
		<i>All-Stainless</i> Modular Platforms for 8 stalls each			
		The structural bases of the Modules; Height of your concrete cow platform should be 34" - if you are comfortable with a 38" working height.			
4	Units	To be discussed!			\$ 6,857



We build our parlor modules on platforms, a frame work made form 2" x 4" steel tubing and usually 53" wide x 50 ft long for the typical dbl. 12. Normally, we slide the Modules into place on this steel frame work, pushed by a Skid Loader.

Parlors up to dbl. 12 come as two Modules, left and right. We have tight control over completion dates and rarley miss agreed-on delivery dates by more than a week.

Summary Page

		Sub-Total Materials			\$ 275,552
		Less 15% Factory Direct Discount			\$ (41,333)
		Pre-Installation Labor and Supplies provided by TechForAg at it's factory to convert the above materials into a <i>Ready-To-Milk</i> Modular Parlor; <i>Calculated at 14% of cost of Sub-Total Materials</i>			\$ 38,577
		Net Cost of Parlor			\$ 272,796
4	Trucks	Freight - @ 2.75/mile/truck			\$ 2,750
		On-Site Installation Labor, Supplies & Expenses Covers several items:			
		1. Time (14 working days of 12 hrs) of two Parlor Specialists, who will be on-site for both installation and start-up of milking.			\$ 21,840
		2. Six Trips, two installers, to and from the dairy @ \$140			\$ 1,680
		Grand Total Parlor with Freight & Installation			\$ 299,066
		Per Stall			\$ 9,346

Terms - I

If production at TFA starts several months in the future

- 1) 15% down at signing of contract**
- 2) 40% on start of production**
- 3) 40% on delivery of parlor to the dairy**
- 4) 5% on start-up of milking**
- 5) \$1,000 Rebate for prompt payment**

Terms - II

If production at TFA starts more or less immediately

- 1) 35% at signing of contract, plus**
- 2) 60% on delivery of parlor to the dairy**
- 3) 5% on start-up of milking**
- 4) \$1,000 Rebate for prompt payment**

Please Note

18 Months warranty on all materials. There's no charge for labor nor mileage for 180 days. Does not apply to the Compressed Air Group and the Vacuum Group, for which we pass on the manufacturer's warranty

Warranty starts *after* parlor has been paid for in full.