

# A TechForAg 'Ready-To-Milk' Modular Parlor

*Model: Dbl. 12 Original Germania ParaBone*

**Partially New - Partially Remanufactured**

*Key Features: Conventional Exit - Automatic Indexing - Galvanized*

*Preliminary Proposal For Website # 189 / 1006 17 - # 1*



<i>Qty</i>	<i>Units</i>	<i>Description</i>			<i>Cost to End-user</i>
24	Stalls	<b>Germania ParaBone Stalls - Galvanized, Remanufactured</b> - All stainless RumpRails; 30" Cow-to-Cow spacing - (2) Support posts per side - Conventional Exit Brisket Bar - Auto-Indexing (w/(4) 3" x 10" stainless Cylinders) - Galvanized Overhead Support Structure			\$ 20,914

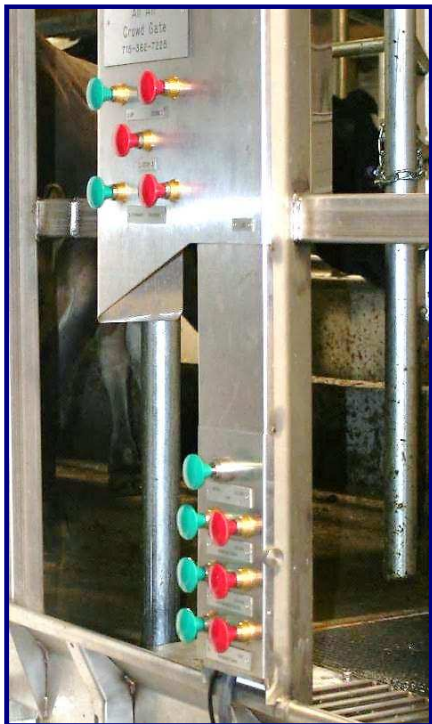
*Modules to be 56" wide with 10" Indexing System to accommodate 1,800 lbs + Cows*



*Galvanized Germania Brisket Bars - Not Rapid Exit*

Self-supporting without any additional posts (no sequence gates either). Therefore, no posts for the cows to walk around and no posts for you to clean around.

<i>Qty</i>	<i>Units</i>	<i>Description</i>			<i>Cost to End-user</i>
2	Groups	<p><b>Automated Cow Traffic Controls</b></p> <ul style="list-style-type: none"> <li>- (3) 3" x 10" stainless Cylinders for Indexing</li> <li>- (4) 3" x 10" stainless Cylinders for Entrance and Exit Gates</li> <li>- Main Control Panel with (6) Control Buttons</li> <li>- Remote Control Panel in front to reduce walking</li> </ul>			<i>Included in Cost of Stalls</i>
<i>All-stainless Heritage cylinders are easy to service. Just remove (4) bolts....</i>					



**Cow Traffic Controls at last stalls on either side of parlor. Plus (2) remote panels in front.  
5-Button Crowd Gate controls on one side only. Stainless cylinders operate all Gates & Automatic Indexing**

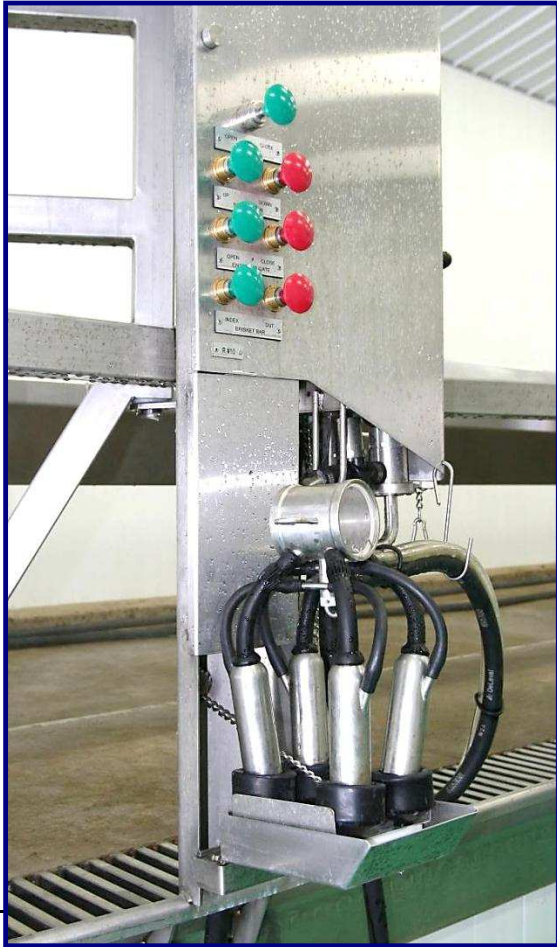
<i>Qty</i>	<i>Units</i>	<i>Description</i>			<i>Cost to End-user</i>
24	Stalls	Stainless Curbing and Gutters, galvanized Grates			\$ 10,929



0	Stalls	<i>Stainless</i> Curbing, but no Gutters and Grates			\$ -
---	--------	-----------------------------------------------------	--	--	------

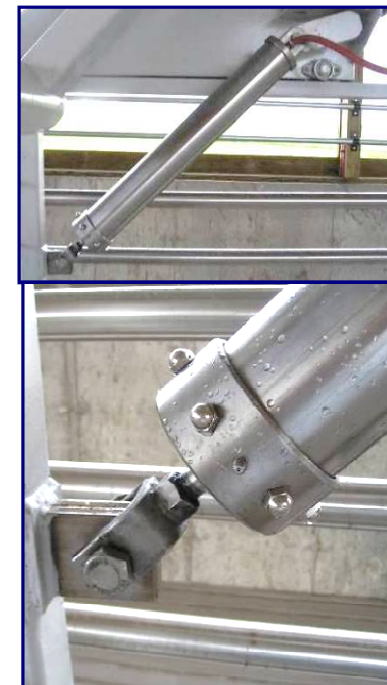
0	Units	15" x 10 ft x 11 ga Cross-Over Channels ...one at either end of pit			\$ -
---	-------	------------------------------------------------------------------------	--	--	------

<i>Qty</i>	<i>Units</i>	<i>Description</i>			<i>Cost to End-user</i>
0	Units	<p align="center"><b>Air Powered CIP Cup Holders</b></p> <p>Single push button operated - "Now you see them - then you don't"</p> <p>Match Jetter Cups to Inflation - <i>Brand &amp; Model #</i> _____</p>			



24	Units	<b>DeLaval Fold-Up CIP Cup Holders</b>			\$ 1,714
0	Units	<p align="center"><b>Traditional CIP Cup Holders</b></p> <p>About \$160 less than FoldUp Cup Holders (Slide Rubber Cups into a stainless Rack)</p>			\$ -

<i>Qty</i>	<i>Units</i>	<i>Description</i>		<i>Cost to End-user</i>
1	24 ft x 50 ft	<p align="center"><b>HERITAGE</b></p> <p align="center"><b>Heavy Duty All-Air Operated Crowd Gate - <i>New!</i></b></p> <p align="center"><b>Cold galvanized</b></p> <p align="center"><b>Various other gates are <i>Optionally Available</i></b></p>		\$ 19,950
0	ft	<b>C-4 x 6.5 lbs Crowd Gate Channel (Hot-dip galvanized)</b>		\$ -



**Heavy Duty, Germania-Style Crowd Gate; Air-Powered Gear Motor - no electric controls what-so-ever. Lifts anywhere in Holding Pen**

For more information go to  
[www.techforag.com/WhyCrowdGates](http://www.techforag.com/WhyCrowdGates)

<i>Qty</i>	<i>Units</i>	<i>Description</i>			<i>Cost to End-user</i>
0	ft	<p><b>Holding Pen Fence, galvanized</b></p> <p>with 3" verticals @ 5 ft on center per 20 ft section of fence;  (4) 1 1/2" Pipe Horizontals @ 12" o/c</p> <p>Normally, your Contractor provides the Holding Pen Fences.  We'll provide them if he doesn't want to or can't @ \$74/ft</p>			\$ -
0	ft	<p><b>2 x 10 ft V-Lane Fences from H.P. into Parlor...</b></p> <p>@ \$74/ft less 15%</p>			\$ -
		<p><i>Three Crowd Gate Control Stations:</i></p>			<b>Cost included with Crowd Gate</b>



*Left:* Main Control station in back of parlor;

*Center:* Remote Controls in back of Holding Pen

*Right:* Two extra buttons in front of parlor to reduce walking

Qty	Units	Description		Cost to End-user
24	Units	<p align="center"> <b>Original Germania Model PB No-Arm TakeOffs -</b>  <b>Remanufactured</b>            All-Air Controls, All-stainless            For more information on Arm TakeOffs go to  <a href="http://www.techforag.com/AutomaticTakeOffsMain.html">http://www.techforag.com/AutomaticTakeOffsMain.html</a> </p>		<p align="right">           \$ <b>20,400</b> </p>



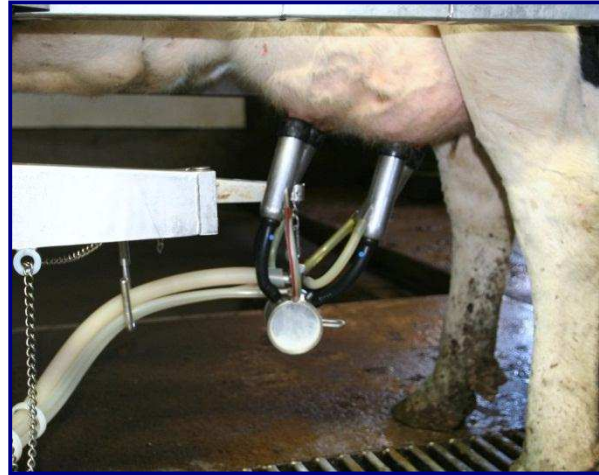


<i>Qty</i>	<i>Units</i>	<i>Description</i>			<i>Cost to End-user</i>
<b>AIC Meters &amp; TakeOff Controls - New!</b>					
0	Units	Germania UpGrade Package			\$ -
0	Pcs	Horizontal stainless Bracket for Cabinet Mounting			\$ -
0	Pcs	Wire Splice Wizard 28-12 Gauge (5 pole)			\$ -
0	Pcs	Gray Wire Nuts			\$ -
0	Unit	18 Amp Linear Regulated Power Supply - 24 VDC Output			\$ -
0	Units	24 VDC MAC 3-Way Valve			<b>Included</b>
<i>Optional</i>					
0	Units	Presto Master Controller			\$ -
0	Units	Herd Trakker Plus			\$ -
0	ft	Communication Cable for Herd Tracker Plus			\$ -
0	ft	2-Conductor 12 ga stranded looped wire			\$ -
0	ft	1" Conduit			\$ -
0	pcs	SS Band Clamps for Controller			\$ -
0	Sets	Misc Installation Supplies & Materials			\$ -
Page 9 of 33					

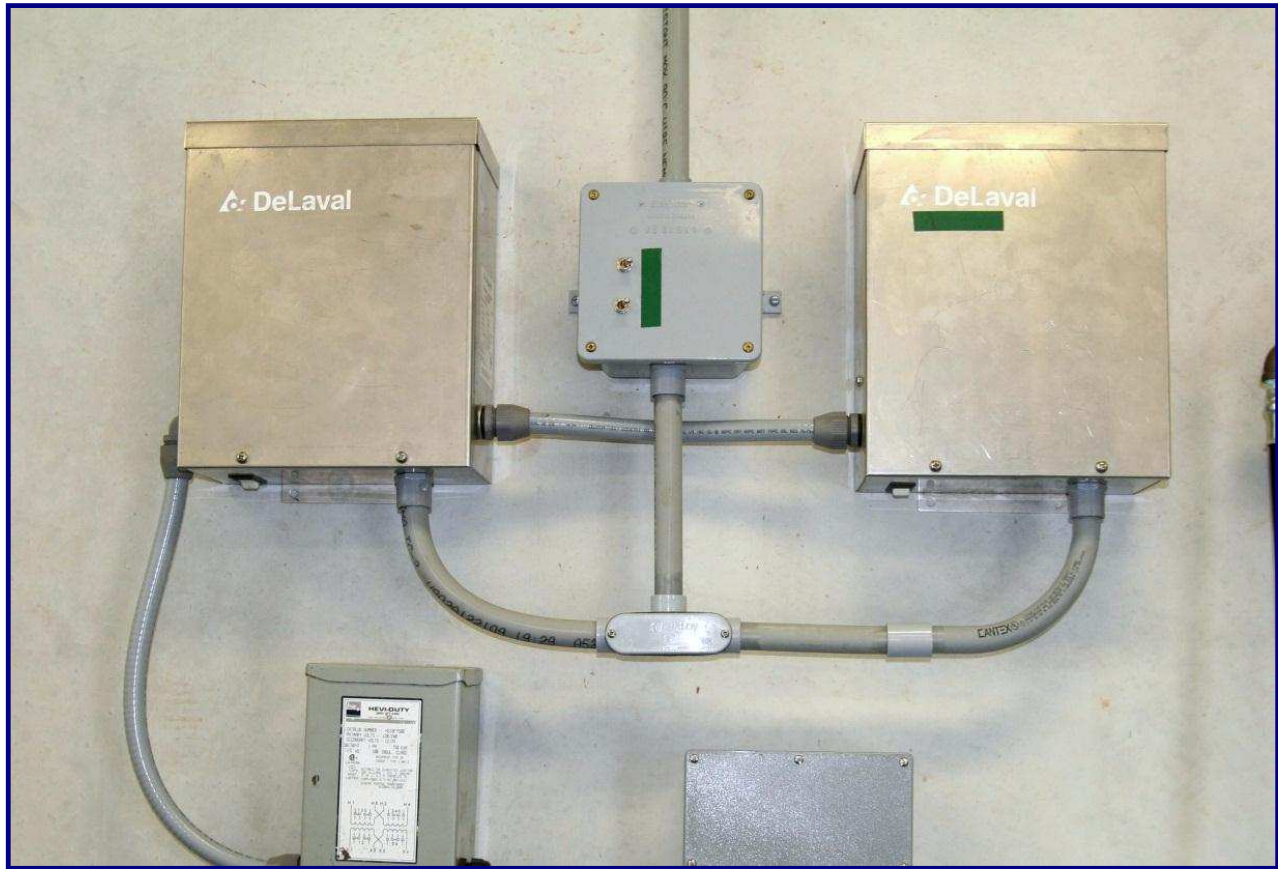
<i>Qty</i>	<i>Units</i>	<i>Description</i>			<i>Cost to End-user</i>
0	Units	Automatic Sort Gate			\$ -



<i>Qty</i>	<i>Units</i>	<i>Description</i>			<i>Cost to End-user</i>
		<p align="center"><b>Original Germania</b>  <b>Top Outlet Claw-Clusters - Remanufactured</b></p> <p>with Air Forks and 06 Shells  - 10 ft of milk and CIP Hose  - 10 ft of Pulsation Hose  - Sort Air Tubes  - Inflatons of your choice</p>			
24	Units				\$ 7,106
24	Units	<b>DeLatron Pulsators - Remanufactured</b>			\$ 4,286

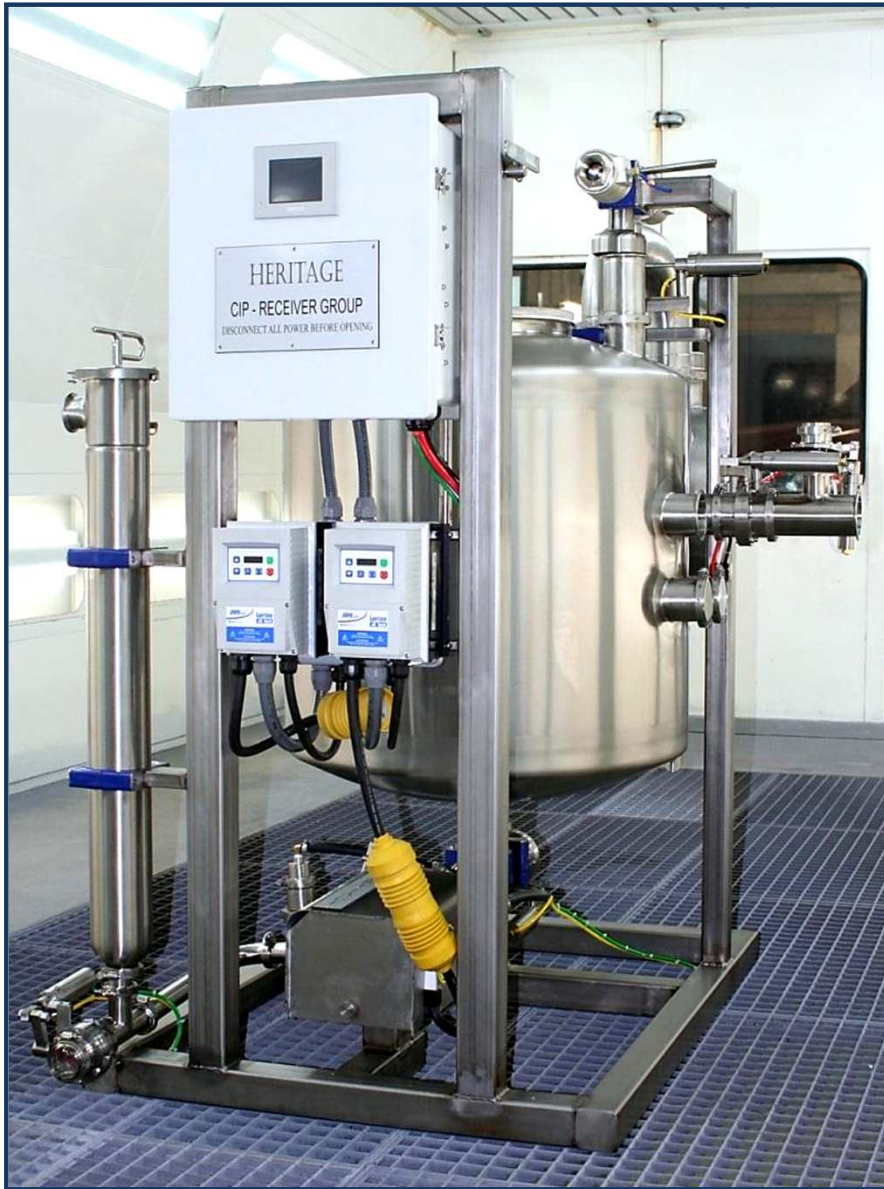


<i>Qty</i>	<i>Units</i>	<i>Description</i>			<i>Cost to End-user</i>
		<p align="center"><b>PVC Pulsation &amp; Fresh-Air Support System - New!</b></p> <ul style="list-style-type: none"> <li>- 3" PVC Pulsation line with hoses, fittings &amp; wiring harness</li> <li>- 3" PVC FreshAir line with fittings &amp; hoses</li> <li>- (4) FreshAir Filters</li> <li>- (2) 3" PVC Cross-Overs in front &amp; back</li> </ul>			
24	Stalls	- Pulsators included with Claw-Clusters			\$ 2,229
		<p align="center"><b>24-Unit Delatron Pulsation Controller - New!</b></p> <p align="center"><b>2nd Controller is Stand-by for instant change-over; no tools required</b></p> <p><i>Electrician provides 120 volt receptacle nearby - bid separately!</i></p>			
2	Units				\$ 4,271



Qty	Units	Description			Cost to End-user
<p>HERITAGE</p> <p><b>CIP-Receiver Combination Group - Partially New! - Partially Remanufactured</b></p>					
0	Stall Equiv.	This group combines the traditional Receiver Group and the CIP System into a single pre-assembled aggregate - pre-plumbed, pre-wired and			\$ -
		26" diam. x 26"/36" Receiver - which is also the Wash Vat for the CIP Cycle - <b>New!</b>			
		- Moisture Trap with 4" Vacuum supply & 4" U-bend - <b>Remanufactured</b>			
		<ul style="list-style-type: none"> <li>- (1) 4" x 33" Sock Milk Filters with 2" side outlet - <b>New!</b></li> <li>- (2) 2 hp Milk Pumps - <b>New!</b> Or 3 hp <b>Remanufactured</b></li> <li>- (2) Variable Speed Controller/FreqDrives for Milk Pumps - <b>New!</b></li> </ul>			
		<ul style="list-style-type: none"> <li>- (2) LLC Probes for milk and water levels - <b>New!</b></li> <li>- 1" Input Group with hot and cold water valves + (3) chemical inputs - <b>New!</b></li> </ul>			
		<p><i>Water supply lines to Omal valves should be at least 1" diameter. Otherwise takes too long to fill receiver</i></p>			
		- (1) 2" Ball check valve with air blow-out for rest milk			
		<b>Heritage Model 12.5 Pipe Line Washer</b> with (3) peristaltic chemical Pumps, identical to DeLaval - <b>New!</b>			
		<p><i>Electrician supplies:</i></p> <ul style="list-style-type: none"> <li>- 220 Volt, <u>  X  </u> single phase to this Group</li> </ul>			
		<p><i>Plumber supplies:</i></p> <ul style="list-style-type: none"> <li>- Hot &amp; Cold water to the input group</li> <li>- Cold Water to the Plate Cooler</li> </ul>			
		<p><b>Note -only part of the \$700 for miscellaneous small parts added to cost of Plate Cooler. Installation labor calculates automatically on the 'Summary Page'.</b></p>			Page 13 of 33

## HERITAGE CIP-Receiver Combination Groups



Model 1500 installed at Steve Paul's new dairy Whitewater, WI. November 2009; Dbl. 10 PT-I Expandable to dbl. 16

<i>Qty</i>	<i>Units</i>	<i>Description</i>		<i>Cost to End-user</i>
1	Group	<b>Traditional Receiver Group - Remanufactured</b> 18" x 24" Receiver, 1.5hp Milk Pump, 4" x 33" Filter, Moisture Trap & U-Bend, Flapper Valve, LL Probes & Controller, ButterFly Valve for 3" line, Air Blow Valve, etc.		\$ 4,214
0	Unit	<b>2 hp Variable Speed Drive for Milk Pump</b>		\$ -



1	Group	<b>Automatic CIP System - Remanufactured - with</b> <ul style="list-style-type: none"> <li>- Vertical Wash Sink</li> <li>- Water Level Sensor</li> <li>- Hot &amp; Cold Water Valve</li> <li>- Heritage PipeLine Washer - <b>New!</b></li> <li>- (3) Peristaltic pumps for chemicals - <b>New!</b></li> <li>(1) Air Injector installed at the Receiver Groups</li> <li>- 2" x 2" Divert/3-Way Valve at sink,</li> <li>- Automatic Drains as needed</li> </ul>		Page 15 of 33  \$ 9,000
---	-------	------------------------------------------------------------------------------------------------------------------------------------------------------------------------------------------------------------------------------------------------------------------------------------------------------------------------------------------------------------------------------------------------------------------------------------------------------------------	--	-------------------------------

<i>Qty</i>	<i>Units</i>	<i>Description</i>			<i>Cost to End-user</i>
24	Stalls	<b>3" Lo- Lines - Remanufactured</b> Double slope, single loop, with nipples, fittings, all clamps, gaskets and brackets			\$ 1,714
24	Stalls	<b>2" CIP Line - Remanufactured</b> - with nipples, fittings, all clamps, gaskets & brackets. - Both lines will be dead-ended at back of parlor			\$ 1,200
60	ft	<b>1 1/2" Discharge line - New!</b> from CIP-Receiver Group to Milk Tank (Bottom Loading) and back to CIP Rec Group; incl. Safety Switch at Tank			\$ 2,143





<i>Qty</i>	<i>Units</i>	<i>Description</i>		<i>Cost to End-user</i>
1	Group	<p align="center"><b>Compressed Air System - Remanufactured</b></p> <ul style="list-style-type: none"> <li>- (2) 7.5 hp SpeedAir Compressors</li> <li>- Twin Tower Drier, dries air to minus 10 dgr - <b>New!</b></li> <li>- Extra 80 gl Tank - <b>New!</b></li> <li>- Filters, Lubricator, Electric Drains - <b>New!</b></li> <li>- 1/2" Copper Line to all stations of parlor</li> </ul>		\$ <b>6,875</b>
		<i>Electrician provides 220V to this group ___single or ___3 Phase?</i>		



<i>Qty</i>	<i>Units</i>	<i>Description</i>			<i>Cost to End-user</i>
1	Unit	<b>Walker/RoKa 15 Hp Vacuum System with Oil Vane Pump New!</b>			\$ 3,786
1	Unit	<b>15 hp 'Frequency Controller/Variable Speed Drive - New!</b>			\$ 5,000
1	Group	<i>6" PVC Header Lines with 3" lines to Pulsation and Receiver Group; Also includes Pre-Filter, Check Valve, Test Port, Safety Valve, Slide Valve, Drains.</i>			\$ 1,357
1	Unit	<b>Sentinel Model 350 Vacuum Regulator - New!</b>			\$ 765
		<i>Electrician provides 220 volt to this Group - Bid separately!</i>			



<i>Qty</i>	<i>Units</i>	<i>Description</i>			<i>Cost to End-user</i>
0	sqft	Stainless Covering for Pit Wall 3 ft x 10 ft x 16 ga sheets, # 4 polish			\$ -



<i>Qty</i>	<i>Units</i>	<i>Description</i>			<i>Cost to End-user</i>
0	Units	<p align="center"><b>4 ft x 4 ft stainless Divert Gate</b>  <b>Built from 2 1/2 x 2 1/2 x 11 ga square tubing</b>  <b>Divert exiting cows into a catch pen.</b></p>			\$ -
0	Group	<p align="center"><b>Cylinders for the Divert Gates</b></p> <p>3" x 14" Stainless cylinders w/EV-125 Quick Exhaust Valves  (4) Versa 'Open' &amp; 'Close' Push Buttons</p>			\$ -



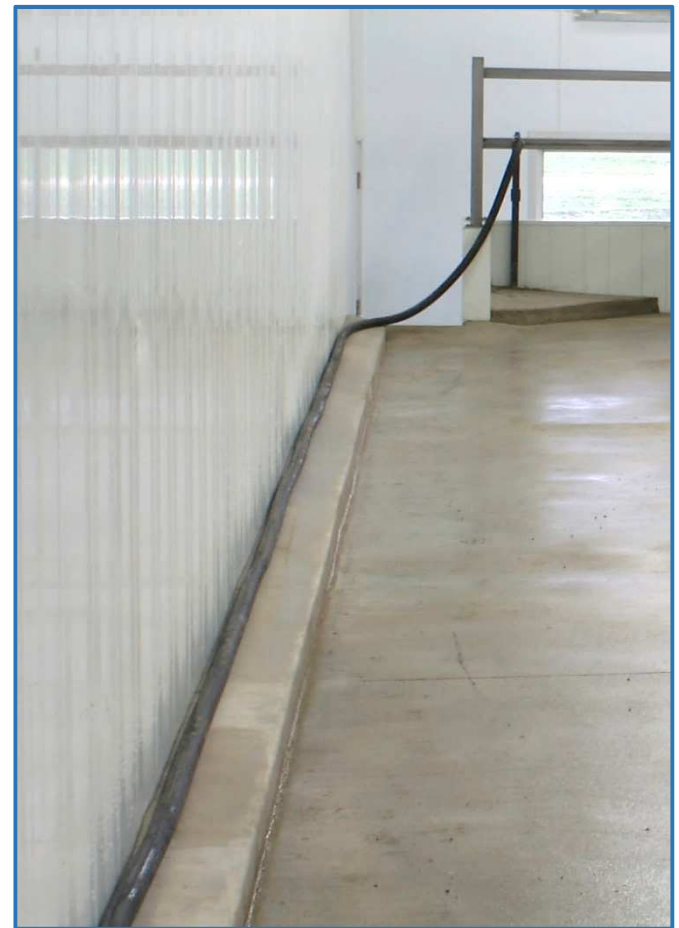
<i>Qty</i>	<i>Units</i>	<i>Description</i>			<i>Cost to End-user</i>
		<b>On-Farm Spare Parts Kit</b> <b>(Contains only new parts)</b>			
1	Group	Includes all essential parts for several years of operation (2) sensors, (1) retract cylinder, at least (4) Whisker Valves, an extra LLC, seal kits for the milk pump, (1) PLC Controller & Power supply for the Heritage Washer together with all small parts, several extra Pulsator, an extra Cluster Assy', etc.			\$ 4,643



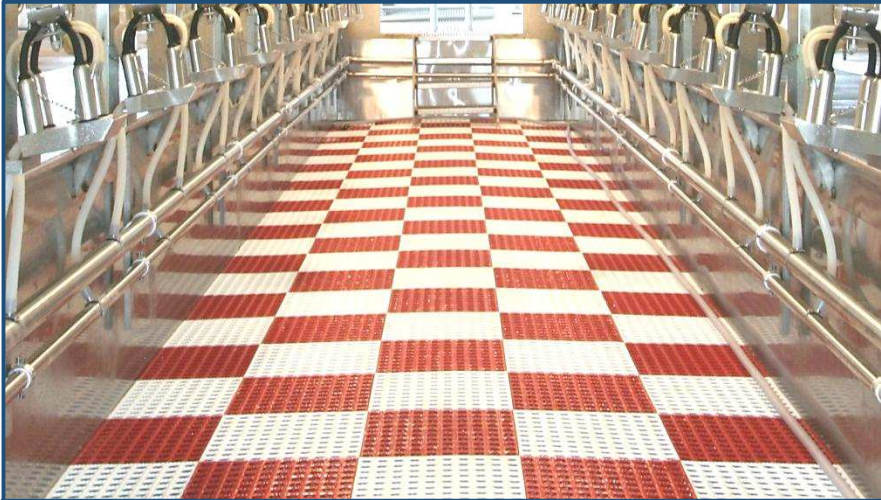
<i>Qty</i>	<i>Units</i>	<i>Description</i>			<i>Cost to End-user</i>
1	Pcs	(Webstaurant) Double Compartment Sink - <b>New!</b>			\$ 786
1	Group	Accessories Group - <b>New!</b> (Webstaurant) Hand Wash Sink, Filter Sock Holder with (1) box of Filters, SST paper towel holder, SST soap dispenser, etc.			\$ 536



<i>Qty</i>	<i>Units</i>	<i>Description</i>			<i>Cost to End-user</i>
1	Group	(1) 35 ft long 1" Wash-Down Hose for the pit			\$ 226
1	Group	(2) 65 ft long 1" Wash-Down Hose for the Cow Platforms			\$ 738
0	Units	Air-Powered, all-stainless Hose Reel for the (3) Wash-Down Hoses			\$ -



<i>Qty</i>	<i>Units</i>	<i>Description</i>			<i>Cost to End-user</i>
0	sqft	<b>Pit Mats for the Milkers</b>			\$ -

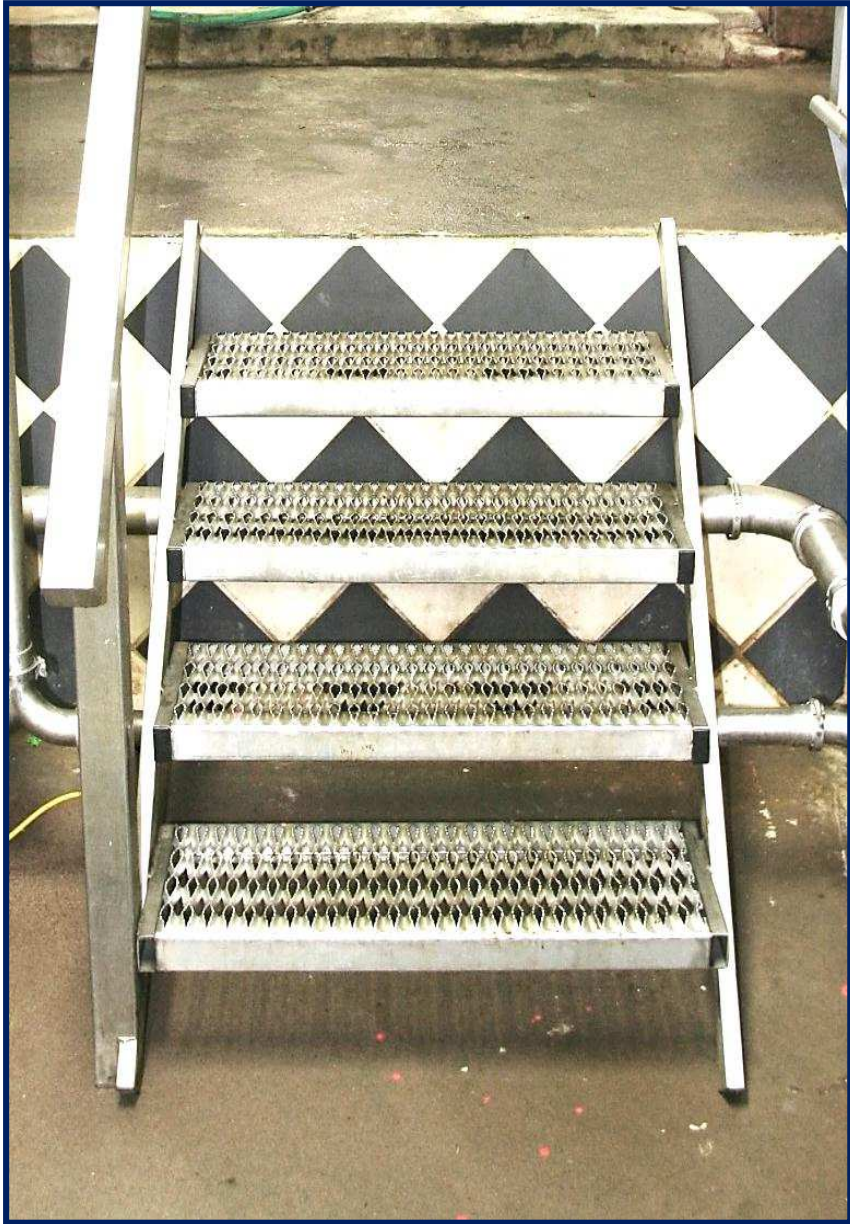




<i>Qty</i>	<i>Units</i>	<i>Description</i>			<i>Cost to End-user</i>
0	sqft	<b>Adjustable Pit Floor</b> <b>...adjusts floor height by 8" up or down</b>			\$ -
		<i>Floors raises and lowers by air pressure</i> <i>no motors, no switches</i> <i>Cost - about \$55/sqft</i>			



<i>Qty</i>	<i>Units</i>	<i>Description</i>			<i>Cost to End-user</i>
1	Unit	<p align="center"><b>Stainless Pit Steps</b>  from parlor into Holding Pen; 4 steps, 30" wide, 8" riser  with SST Handrail .</p>		\$	993



<i>Qty</i>	<i>Units</i>	<i>Description</i>		<i>Cost to End-user</i>
8	Sets	<p><b>Lights for the Milker Pit</b>            Basically a set of (2) stainless brackets to mount Fluorescent Light Fixtures</p>		\$ 549
		<i>96" Fluorescent Light Fixtures should be vapor tight and 100% corrosion resistant</i>		
		<p><i>We install the brackets on site;</i>  <i>Electrician supplies and installs the fixtures</i></p>		
		<i>This parlor would need (4) 8 ft fixtures per side</i>		



<i>Qty</i>	<i>Units</i>	<i>Description</i>			<i>Cost to End-user</i>
0	Units	<p align="center"><b>AccuWeigh Milk Measuring System</b>  <b>Remanufactured</b>            (Change Low-Line!)</p>			\$ -



**Germania Accuweigh 90 or 65**

		<ul style="list-style-type: none"> <li>- Hold all of the milk for quick check before letting the cows go</li> <li>- Drain and re-vacuumize automatically when cows leave</li> <li>- Provide great vacuum reserve right next to the cow</li> </ul>			
0	Group	<p align="center"><b>AW Control Boxes</b>  <b>Turbo Controller, _____Extra VacShutOff Valves, etc.</b></p>			\$ -
0	Units	<b>Butter Fat Testers</b>			\$ -

<i>Qty</i>	<i>Units</i>	<i>Description</i>			<i>Cost to End-user</i>
0	Unit	<b>Stainless Breezeway Fences with 3ft 'Side Wing'</b>			\$ -



0	ft	<b>Stainless Cap for Breezeway Wall</b>			\$ -
---	----	-----------------------------------------	--	--	------



<i>Qty</i>	<i>Units</i>	<i>Description</i>			<i>Cost to End-user</i>
0	Stalls	1" Kraiburn Rubber Mats (Made in Germany) For the Cow Platforms			\$ -



<i>Qty</i>	<i>Units</i>	<i>Description</i>			<i>Cost to End-user</i>
		<b>Modular Platforms for 12 stalls each</b> <b><i>Stainless</i></b>			
		The structural bases of the Modules; Height of your concrete cow platform should be 34" - if you are comfortable with a 38" working height - <b>To be discussed!</b>			
2	Units				\$ 5,143



We build our parlor modules on platforms, a frame work made from 2" x 4" stainless tubing and usually 53" wide x 50 ft long for the typical dbl. 12. Normally, we slide the Modules into place on this steel frame work, pushed by a Skid Loader.



## Summary Page

		<b>Sub-Total Materials</b>			\$ 141,467
		<b>Less 15% Dairy-Direct Discount</b>			\$ (21,220)
		<b>Cost of Parlor Materials after DDD</b>			\$ 120,247
		<b>Pre-Installation Labor and Supplies</b> provided by TechForAg at it's factory to convert the above materials into a <i>Ready-To-Milk</i> Modular Parlor; <b>Calculated at 12% of Cost of Materials</b>			\$ 16,976
2	Trucks	<b>Freight 150 miles @ 3.55 in Wisconsin</b>			\$ 1,065
		<b>On-Site Installation Labor, Supplies &amp; Expenses</b> Covers several items:			
		<b>1. Time for (2) Parlor Specialists @ (16) days @ 12 hrs @ \$65 hr</b>			\$ 24,960
		<b>2. Time Value of (2) Parlor Specialists while driving: (2) trips @ 16 hrs @ \$35/hr</b>			\$ -
		<b>Mileage Charges @ \$.50/mile for 650 miles</b>			\$ -
		<b>Travel Expenses: Motels, Meals, Diesel &amp; Misc. for 20 days @ \$175</b>			\$ -
		<b>2. Visits to dairy for Planning &amp; General Consultation by Rolf, Quality Control and Training</b>			\$ -
		<b>5. Rebate to Customer of \$1,000 for prompt payment of last installment</b>			
		<b>6. Warranty work &amp; follow-up visits</b>			
		<b>Grand Total I Parlor with Freight &amp; Installation</b>			\$ 163,248



## ***Terms - I***

***If production at TFA starts several months in the future***

- 1) 15% down at signing of contract**
- 2) 25% on start of production**
- 3) 55% on delivery of parlor to the dairy**
- 4) 5% On start-up of milking**
- 5) \$1,000 Rebate for prompt payment**

## ***Terms - II***

***If production at TFA starts more or less immediately***

- 1) 35% at signing of contract, plus**
- 2) 60% on delivery of parlor to the dairy**
- 3) 5% on Start-up of Milking**
- 4) \$1,000 Rebate for prompt payment**

### ***Please Note***

**18 Months warranty on all materials. Does not apply to the Compressed Air Group and the Vacuum Group, for which we pass on the manufacturer's warranty  
Warranty starts *after* parlor has been paid for in full**