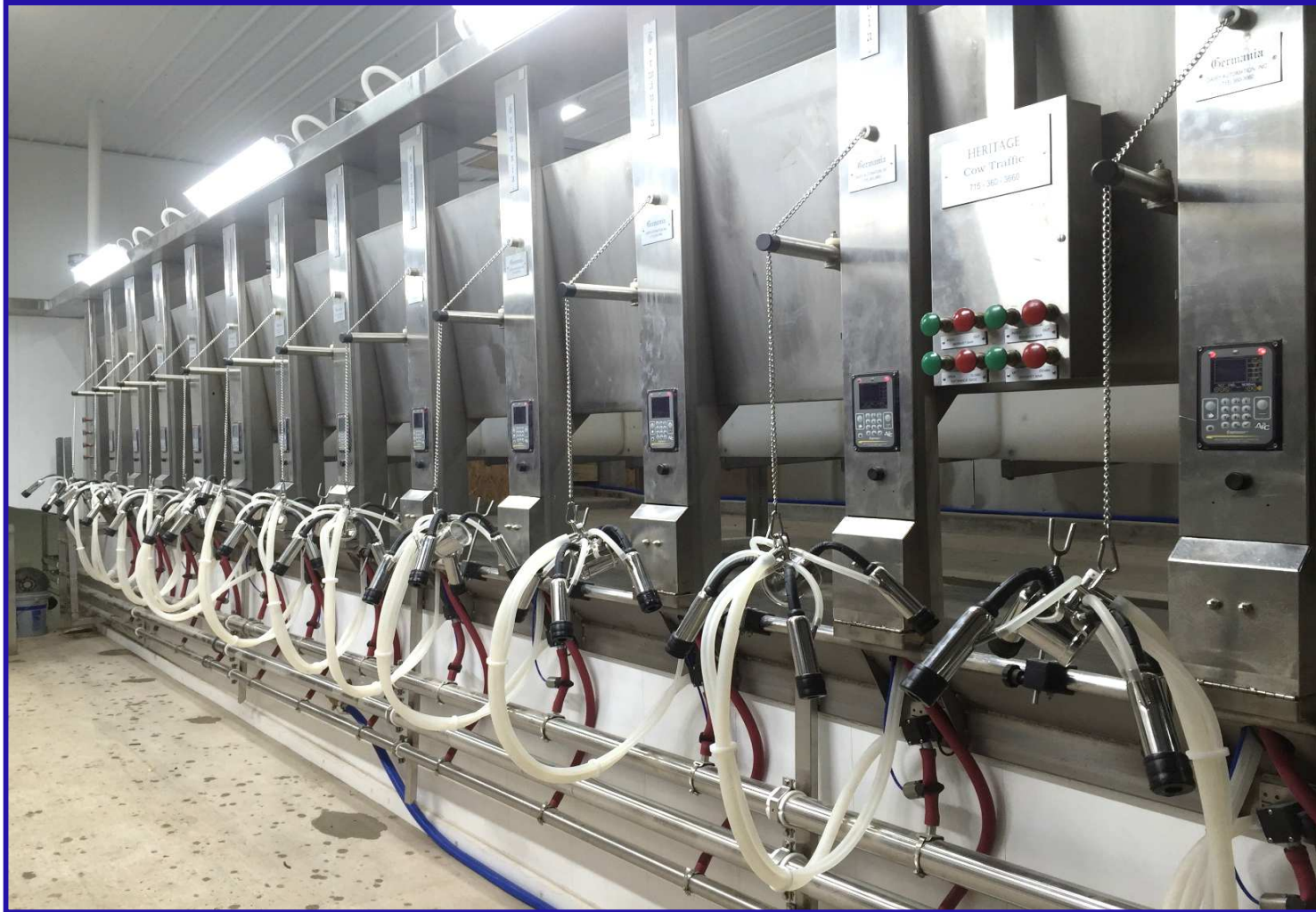


A TechForAg 'Ready-To-Milk' Modular Parlor
Model: Dbl. 16 Original Germania ProTime I Parallel

Partially New - Partially Remanufactured

Key Features: Rapid Exit - Automatic Indexing - All Stainless

Preliminary Proposal Prepared For: WebSite - # 185 - 1



<i>Qty</i>	<i>Units</i>	<i>Description</i>			<i>Cost to End-user</i>
		Germania ProTime I Parallel Stalls - Remanufactured			
		- All stainless SplashShields 28" spacing			
		- (3) Support posts per side - stainless			
		- Rapid Exit Brisket Bar - stainless			
32	Stalls	- Auto-Indexing (w/(3) 3" x 10" Cylinders			\$ 66,286



All-stainless Germania 'Vertical Lift' Front End with Sequencing Gates

If one of them goes down from milk fever you can easily get to her with the skid loader; Raise the Front End and drag her out so you can continue milking

<i>Qty</i>	<i>Units</i>	<i>Brisket Bar in Rapid Exit position</i>			<i>Cost to End-user</i>
1	Group	<p>Automated Cow Traffic Controls</p> <ul style="list-style-type: none"> - (6) 3" x 10" stainless Cylinders for Indexing - (2) 3" x 10" stainless Cylinders for Entrance Gates - Rapid Exit; Brisket Bar Up - Down - Main Control Panel with (8) Control Buttons - Remote Control Panel in front to reduce walking 			<i>Included in Cost of Stalls</i>



**Cow Traffic Controls at last stalls on either side of parlor. Plus (2) remote panels in front.
 5-Button Crowd Gate controls on one side only. Stainless cylinders operate all Gates & Automatic Indexing**

<i>Qty</i>	<i>Units</i>	<i>Description</i>			<i>Cost to End-user</i>
32	Stalls	Stainless Curbing but no In-Floor Gutters and Grates			\$ 3,429

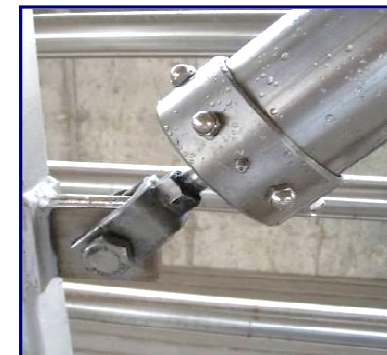


2	Units	15" x 10 ft x 11 ga Cross-Over Channelsone at either end of pit			\$ 1,748
---	-------	---	--	--	----------

<i>Qty</i>	<i>Units</i>	<i>Description</i>		<i>Cost to End-user</i>
32	Units	<p style="text-align: center;">Air Powered CIP Cup Holders</p> <p>Single push button operated - "Now you see them - then you don't"</p> <p>Match Jetter Cups to Inflation - <i>Brand & Model #</i> _____</p>		<i>Included in Cost of Stalls</i>



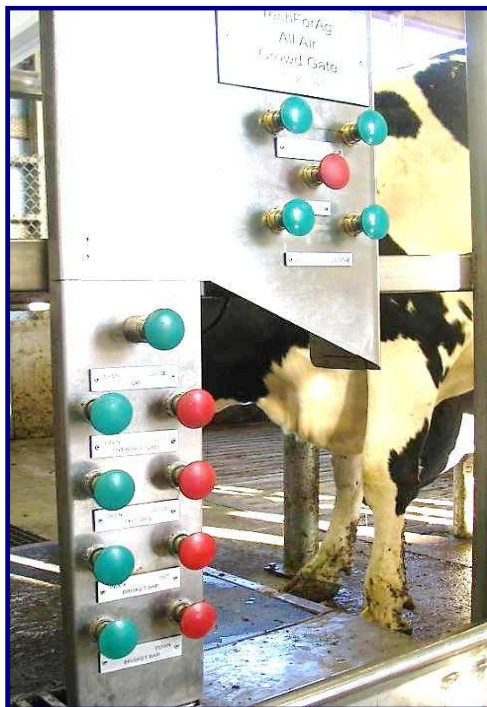
<i>Qty</i>	<i>Units</i>	<i>Description</i>		<i>Cost to End-user</i>
0	29 ft x 60 ft	<p align="center">HERITAGE</p> <p align="center">Heavy Duty All-Air Operated Crowd Gate</p> <p align="center">Cold galvanized</p> <p align="center">Various other gates are <i>Optionally Available</i></p>		\$ -
0	ft	<p align="center">C-4 x 6.5 lbs Crowd Gate Channel</p> <p align="center">(Hot-dip galvanized)</p>		\$ -



Heavy Duty, Germania-Style Crowd Gate; Air-Powered Gear Motor - no electric controls what-so-ever. Lifts anywhere in Holding Pen

For more information go to
www.techforag.com/WhyCrowdGates

<i>Qty</i>	<i>Units</i>	<i>Description</i>			<i>Cost to End-user</i>
0	ft	<p>Holding Pen Fence, galvanized</p> <p>with 3" verticals @ 5 ft on center per 20 ft section of fence; (4) 1 1/2" Pipe Horizontals @ 12" o/c</p> <p>Normally, your Contractor provides the Holding Pen Fences. We'll provide them if he doesn't want to or can't @ \$74/ft les</p>			\$ -
0	ft	<p>2 x 10 ft V-Lane Fences from H.P. into Parlor...</p> <p>@ \$74/ft less 15%</p>			\$ -
		<p><i>Three Crowd Gate Control Stations:</i></p>			Cost include with Crowd Gate

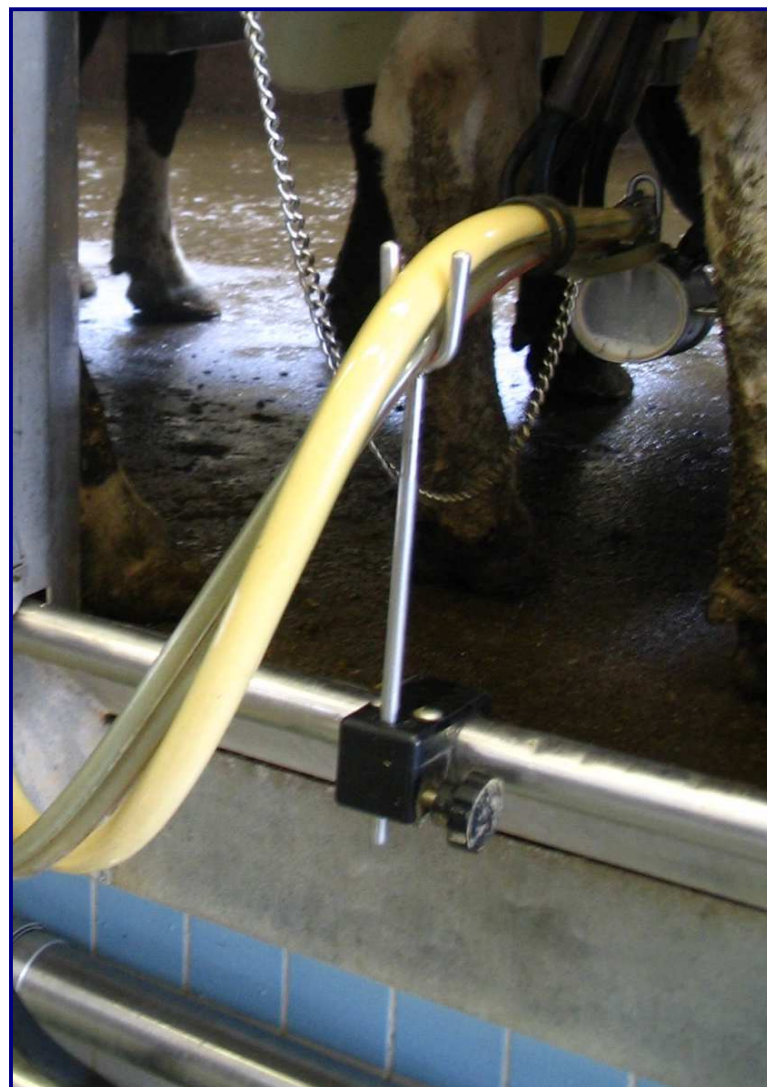


Left: Main Control station in back of parlor;

Center: Remote Controls in back of Holding Pen

Right: Two extra buttons in front of parlor to reduce walking

<i>Qty</i>	<i>Units</i>	<i>Description</i>			<i>Cost to End-user</i>
32	Units	Original Germania Model P No-ArmTakeOffs includes 2-way adjustable Hose Support Controlled by AIC Meters			\$ 13,486

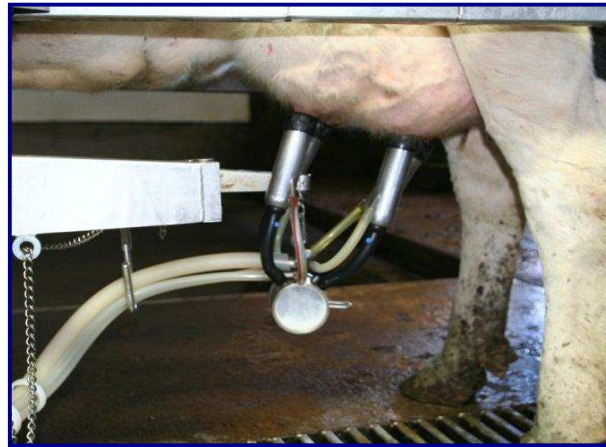


<i>Qty</i>	<i>Units</i>	<i>Description</i>			<i>Cost to End-user</i>
AIC Meters & TakeOff Controls - New!					
32	Units	Germania UpGrade Package			\$ 35,200
32	Pcs	Horizontal stainless Bracket for Cabinet Mounting			\$ 245
32	Pcs	Wire Splice Wizard 28-12 Gauge (5 pole)			\$ 53
100	Pcs	Gray Wire Nuts			\$ 16
1	Unit	18 Amp Linear Regulated Power Supply - 24 VDC Output			\$ 843
1	Units	Presto Master Controller			\$ 825
32	Units	24 VDC MAC 3-Way Valve			Included
<i>Optional</i>					
0	Units	Herd Tracker Plus			\$ -
0	ft	Communication Cable for Herd Tracker Plus			\$ -
0	ft	2-Conductor 12 ga stranded looped wire			\$ -
0	ft	1" Conduit			\$ -
0	pcs	SS Band Clamps for Controller			\$ -
24	Sets	Misc Installation Supplies & Materials			\$ 840
Page 9 of 33					

<i>Qty</i>	<i>Units</i>	<i>Description</i>			<i>Cost to End-user</i>
0	Units	Automatic Sort Gate			\$ -

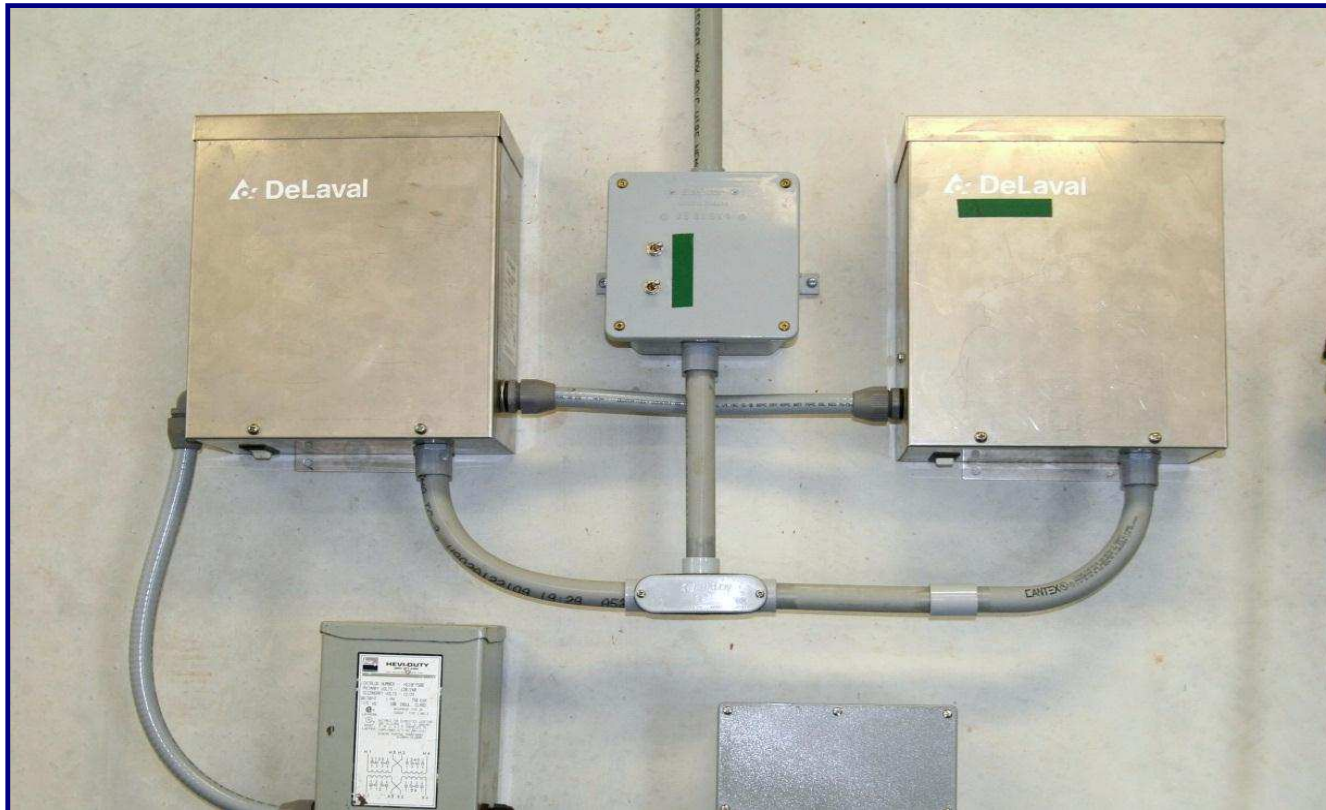


<i>Qty</i>	<i>Units</i>	<i>Description</i>			<i>Cost to End-user</i>
		HERITAGE Top Outlet Claw-Clusters - Remanufactured with Air Forks and 06 Shells All-Silicone Rubber Goods: - Milk Hose - CIP Hoses - Pulsation Hoses - Short Air Tubes - Inflations of your choice			
32	Units				\$ 11,276
32	Units	BouMatic-Style Pulsators - Remanufactured			\$ 5,714



Germania's Top Outlet Claw hangs well balanced on the arm for milking and equally so in the rest position.

<i>Qty</i>	<i>Units</i>	<i>Description</i>			<i>Cost to End-user</i>
		PVC Pulsation & Fresh-Air System - New!			
32	Stalls	<ul style="list-style-type: none"> - 3" PVC Pulsation line with hoses, fittings & wiring harness - 3" PVC FreshAir line with fittings & hoses - (4) FreshAir Filters - (2) 3" PVC Cross-Overs in front & back 			\$ 2,971
		- Pulsators included with Claw-Clusters			
		24-Unit Excalibur Pulsation Controller - New!			
2	Units	<p>2nd Controller is Stand-by for instant change-over; no tools required</p> <p><i>Electrician provides 120 volt receptacle nearby - bid separately!</i></p>			\$ 2,959



Qty	Units	Description			Cost to End-user
<p>HERITAGE CIP-Receiver Combination Group - New!</p>					
0	Stall Equiv.	This group combines the traditional Receiver Group and the CIP System into a single pre-assembled aggregate - pre-plumbed, pre-wired and			\$ -
		24" diam. x 24/34" Receiver - which is also the Wash Vat for the CIP Cycle			
		- AW-style Moisture Trap with 3" Vacuum supply & 3" U-bend			
		'- (1) 4" x 33" Sock Milk Filters with 2" side outlet - (2) 2 hp Milk Pumps, one for stand-by - (2) Variable Speed Controller for Milk Pump, one for stand-by			
		- (2) LLC Probes for milk and water levels - 1" Input Group with hot and cold water valves + (3) chemical inputs			
		<i>Water supply lines to Omal valves should be at least 1" diameter. Otherwise takes too long to fill receiver</i>			
		<i>- 1 1/2" Ball check valve with air blow-out for rest milk</i>			
		'- HERITAGE C-12.5 Pipe Line Washer with (3) peristaltic chemical pumps			
		<i>Electrician supplies: - 220 Volt, __X__single phase to this Group</i>			
		<i>Plumber supplies: - Hot & Cold water to the input group - Cold Water to the Plate Cooler</i>			
		<i>Includes Stand-by Milk Pump with pre-wired Twist-Lock Plugs</i>			
		<i>Also a Stand-by Variable Speed Controller, prewired as well</i>			
0	Unit	6,000 lbs/hr Dual Pass Plate Cooler			\$ -
		(Modify Group for AWs?)			Page 13 of 33

HERITAGE CIP-Receiver Combination Groups



Model 1500 installed at Steve Paul's new dairy Whitewater, WI. November 2009; Dbl. 10 PT-I Expandable to dbl. 16

<i>Qty</i>	<i>Units</i>	<i>Description</i>			<i>Cost to End-user</i>
0	Group	Traditional Receiver Group - Remanufactured, incl. 18" Receiver, 2 hp Milk Pump with Dog House, 4" x 44" Filter, Moisture Trap & U-Bend, Flapper Valve, LL Probes & Controller, Short Plug - Long Plug, Air Blow Valve, etc.			\$ -



0	Group	Automatic CIP System - Remanufactured Vertical Wash Sink, Water Level Sensor, 3/4" Omal Hot & Cold Water Valve - New, Heritage PipeLine Washer - New! (3) Peristaltic pumps for chemicals - New! (1) Air Injector installed at the Receiver Groups 2" x 2" Divert/3-Way Valve at sink, Automatic Drains, etc.			\$ -
---	-------	--	--	--	------

<i>Qty</i>	<i>Units</i>	<i>Description</i>			<i>Cost to End-user</i>
0	Stalls	3" Lo- Lines - Remanufactured Single slope, double loop, with nipples, fittings, all clamps, gaskets and brackets. Lines slope toward Holding Pen			\$ -
0	Stalls	2" CIP Line - Remanufactured - with nipples, fittings, all clamps, gaskets & brackets. - Both lines will be dead-ended at back of parlor			\$ -
0	ft	1 1/2" Discharge line - New! from Receiver Group to Milk Tank (Bottom Loading) and on to Wash sink; incl. Safety Switch at Tank			\$ -



<i>Qty</i>	<i>Units</i>	<i>Description</i>			<i>Cost to End-user</i>
0	Unit	<p align="center">Calf Milk Dispenser</p> <p>Collect warm milk at any time</p>			<p align="center">\$ -</p>



<i>Qty</i>	<i>Units</i>	<i>Description</i>			<i>Cost to End-user</i>
0	Group	<p align="center">Compressed Air System - New!</p> <ul style="list-style-type: none"> - (2) 7.5 hp SpeedAir Compressor - - Twin Tower Drier, dries air to minus 10 dgr - Extra 80 gl Tank - Filters, Lubricator, Electric Drains - 1/2" Copper Line to all stations of parlor 			\$ -
		<i>Electrician provides 220V to this group ___single or ___3 Phase?</i>			



(2) 7.5 hp SpeedAir Compressor

Twin Tower Drier dries air to minus 10 dgr

<i>Qty</i>	<i>Units</i>	<i>Description</i>			<i>Cost to End-user</i>
0	Unit	15 Hp Vacuum System with Lobe-Style Pump - Remanufactured Sutor-Built Lobe-style Blower Pumps, preassembled for instant installation			\$ -
0	Unit	15 hp Frequency Controller/Variable Speed Drive - New!			\$ -
0	Group	<i>6" PVC Header Lines with 3" lines to Pulsation and Receiver Group; Also includes Pre-Filter, Check Valve, Test Port, Safety Valve, Slide Valve, Drains.</i>			\$ -
0	Unit	Sentinel Model 350 Vacuum Regulator			\$ -
<i>Electrician provides 220 volt to this Group - Bid separately!</i>					



<i>Qty</i>	<i>Units</i>	<i>Description</i>			<i>Cost to End-user</i>
0	sqft	Stainless Covering for Pit Wall 3 ft x 10 ft x 16 ga sheets, # 4 polish			\$ -



<i>Qty</i>	<i>Units</i>	<i>Description</i>			<i>Cost to End-user</i>
0	Units	<p align="center">4 ft x 4 ft stainless Divert Gate Built from 2 1/2 x 2 1/2 x 11 ga square tubing Divert exiting cows into a catch pen.</p>			\$ -
0	Group	<p align="center">Cylinders for the Divert Gates</p> <p>3" x 14" Stainless cylinders w/EV-125 Quick Exhaust Valves (4) Versa 'Open' & 'Close' Push Buttons</p>			\$ -



<i>Qty</i>	<i>Units</i>	<i>Description</i>			<i>Cost to End-user</i>
		On-Farm Spare Parts Kit (Contains only new parts)			
1	Group	Includes all essential parts for at least (1) year of operation (6) sensors, (2) retract cylinder, at least (4) of each air valves, an extra LLC, seal kits for the milk pump, (2) PC Boards for the Pipe Line Washer, several extra Pulsator, an extra Cluster Assy', etc.			\$ 2,857



<i>Qty</i>	<i>Units</i>	<i>Description</i>			<i>Cost to End-user</i>
0	Pcs	Double Compartment Sink			\$ -
0	Group	Accessories Group Hand Wash Sink, Filter Sock Holder with (1) box of Filters, SST paper towel holder, SST soap dispenser, etc.			\$ -



<i>Qty</i>	<i>Units</i>	<i>Description</i>			<i>Cost to End-user</i>
0	Group	(1) 35 ft long 1" Wash-Down Hose for the pit			\$ -
0	Group	(2) 65ft long 1" Wash-Down Hose for the Cow Platforms			\$ -
0	Units	Air-Powered, all-stainless Hose Reel for the (3) Wash-Down Hoses			\$ -



<i>Qty</i>	<i>Units</i>	<i>Description</i>			<i>Cost to End-user</i>
0	sqft	Pit Mats for the Milkers			\$ -



<i>Qty</i>	<i>Units</i>	<i>Description</i>			<i>Cost to End-user</i>
0	sqft	Adjustable Pit Floor ...adjusts floor height by 8" up or down			\$ -
		<i>Floors raises and lowers by air pressure</i> <i>no motors, no switches</i> <i>Cost - about \$55/sqft</i>			



<i>Qty</i>	<i>Units</i>	<i>Description</i>			<i>Cost to End-user</i>
1	Unit	<p align="center">Stainless Pit Steps from parlor into Holding Pen; 4 steps, 30" wide, 8" riser with SST Handrail .</p>		\$	937



<i>Qty</i>	<i>Units</i>	<i>Description</i>			<i>Cost to End-user</i>
12	Sets	<p>Lights for the Milker Pit Basically a set of (2) stainless brackets to mount Fluorescent Light Fixtures</p>			\$ 823
		<i>48" Fluorescent Light Fixtures should be vapor tight and 100% corrosion resistant</i>			
		<p><i>We install the brackets on site;</i> <i>Electrician supplies and installs the fixtures</i></p>			
		<i>This parlor would (6) 8 ft fixtures per side</i>			



<i>Qty</i>	<i>Units</i>	<i>Description</i>			<i>Cost to End-user</i>
0	Units	<p align="center">AccuWeigh Milk Measuring System Remanufactured (Change Low-Line!)</p>			\$ -



		<p align="center">Germania Accuweigh 90 or 65</p> <ul style="list-style-type: none"> - Hold all of the milk for quick check before letting the cows go - Drain and re-vacuumize automatically when cows leave - Provide great vacuum reserve right next to the cow 			
0	Group	<p align="center">AW Control Boxes Turbo Controller, ____ Extra VacShutOff Valves, etc.</p>			\$ -
0	Units	<p align="center">Butter Fat Testers</p>			\$ -

<i>Qty</i>	<i>Units</i>	<i>Description</i>			<i>Cost to End-user</i>
0	Unit	Stainless Breezeway Fences with 3ft 'Side Wing'			\$ -



0	ft	Stainless Cap for Breezeway Wall			\$ -
---	----	---	--	--	------



<i>Qty</i>	<i>Units</i>	<i>Description</i>			<i>Cost to End-user</i>
0	Stalls	1" Kraiburn Rubber Mats (Made in Germany) For the Cow Platforms			\$ -



<i>Qty</i>	<i>Units</i>	<i>Description</i>		<i>Cost to End-user</i>
2	Units	<p>Modular Platforms for 16 stalls each</p> <p><i>Stainless</i></p> <p>The structural bases of the Modules; Height of your concrete cow platform should be 34" - if you are comfortable with a 38" working height - To be discussed!</p>		\$ 6,857



We build our parlor modules on platforms, a frame work made form 2" x 4" stainless tubing and usually 53" wide x 50 ft long for the typical dbl. 12. Normally, we slide the Modules into place on this steel frame work, pushed by a Skid Loader.

Summary Page

		Sub-Total Materials			\$ 157,364
		Less 15% Dairy Direct Discount			\$ (23,605)
		Pre-Installation Labor and Supplies provided by TechForAg at it's factory to convert the above materials into a <i>Ready-To-Milk</i> Modular Parlor; Calculated at 16% of Cost of Materials			\$ 25,178
2	Trucks	Freight 150 miles @ 3.65			\$ 1,095
		On-Site Installation Labor, Supplies & Expenses Covers several items:			
		1. Time for (2) Parlor Specialists @ (3) days @ 12 hrs @ \$65 hr			\$ 4,680
		2. Time Value of (1) Parlor Specialists while driving: (2) trips @ 14 hrs @ \$35/hr			\$ -
		Mileage Charges @ \$.50/mile for 650 miles			\$ -
		Travel Expenses: Motels, Meals & Misc. for 5 days @ \$175			\$ -
		2. Visits to dairy for Planning & General Consultation by Rolf, Quality Control and Training			\$ -
		5. Rebate to Customer of \$1,000 for prompt payment of last installment			
		6. Warranty work & follow-up visits			
		Grand Total I Parlor with Freight & Pre-Installation			\$ 164,713
		Per Stall			\$ 5,147
					Page 33 of 33