

## A TechForAg 'Ready-To-Milk' Modular Parlor

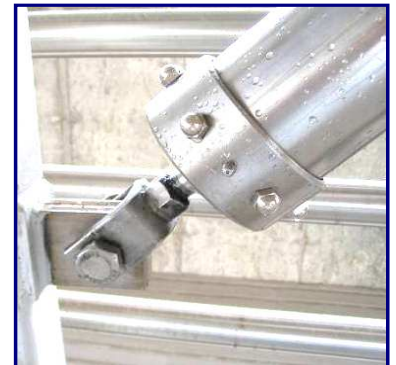
**Model: Dbl. 12 DeLaval Blue Diamond Olympic HerringBone** (Quantum)

**Key Features: Rapid Exit - Automatic Indexing - Galvanized**

**Prepared For: Website # 142 - Preliminary Proposal # 041221-4**

<i>Qty</i>	<i>Units</i>	<i>Description</i>	<i>Cost to End-user</i>
24	Stalls	<p style="text-align: center;"><b>Blue Diamond - Rapid Exit</b></p> <ul style="list-style-type: none"> <li>- All galv. RumpRails; <b>45" spacing</b></li> <li>- Stainless Splash Shields</li> <li>- (6) Support posts per side</li> <li>- <i>Rapid Exit</i> Front end</li> </ul>	\$ <b>6,857</b>
<i>Modules to be 53" wide with 10" Indexing System to accommodate 1,800 lbs + Cows</i>			
2	Groups	<p style="text-align: center;"><b>Automated Cow Traffic Controls - New!</b></p> <ul style="list-style-type: none"> <li>- (1) Main Control Stations with (8) Buttons each</li> <li>- (1) Remote Control Boxes with (8) buttons each</li> </ul>	\$ <b>7,557</b>
24	Stalls	<b>Automatic DeckFlush</b> integrated into the module base	\$ <b>4,286</b>
0	Units	<b>Original Germania Grates - Remanufactured</b> and welded into the stainless Gutter - Cold galvanized	\$ <b>-</b>
24	Units	<b>Traditional CIP Cup Holders - Remanuf'd</b>	\$ <b>617</b>
Page 1 of 16			

<i>Qty</i>	<i>Units</i>	<i>Description</i>		<i>Cost to End-user</i>
1	25 ft x 80 ft	<b>Original Germania Heavy Duty All-Air Operated Crowd Gate Remanufactured</b>		\$ 8,000
0	ft	<b>C-4 x 6.5 lbs Crowd Gate Channel - New!</b> Welds very straight over 5 ft Span/Distance between Vertical Posts - Does not require any other re-enforcement or support		\$ -

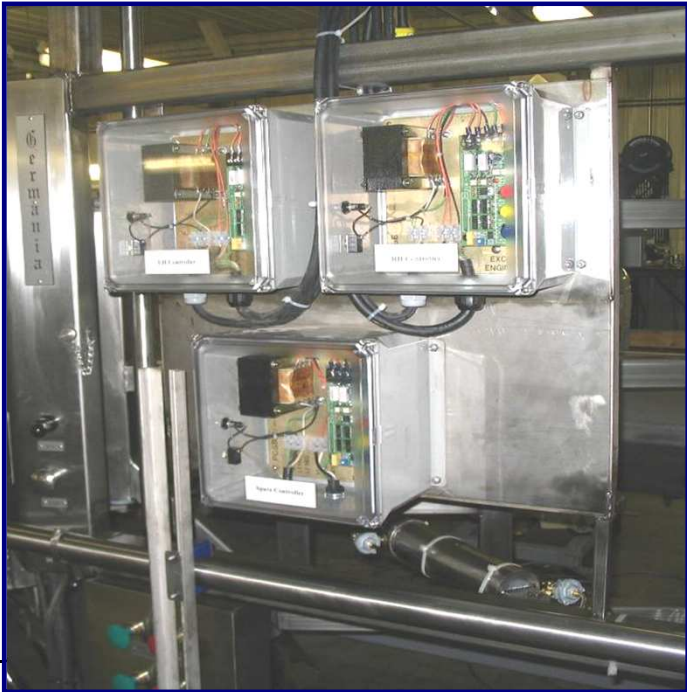


**Heavy Duty, Germania-Style Crowd Gate; Air-Powered Gear Motor - no electric controls what-so-ever. Lifts anywhere in Holding Pen and returns overhead cows to rear of pen. Air Motor shuts off automatically, both on front and back**

**Manure Scraper optionally available. Can also be added later!**

*Heritage Gates up to 29 ft wide come with 4" easy-to-service all-stainless cylinders*

<i>Qty</i>	<i>Units</i>	<i>Description</i>			<i>Cost to End-user</i>
24	Units	<p align="center"><b>Model B Arm TakeOffs - Remanufactured</b>  <b>All-Air controlled, hot dipped galvanized</b></p>			<p align="right">\$ <b>37,543</b></p>
24	Units	<p align="center"><b>Original Germania</b>  <b>Top Outlet Claw-Clusters -</b></p> <ul style="list-style-type: none"> <li>- Air Forks</li> <li>- 06 Shells</li> <li>- 60" Milk Hose</li> <li>- 108" Pulsation Hose</li> <li>- Short air tubes</li> <li>- Liners of your choice: <i>Brand &amp; Model</i> _____</li> <li>- with <b>BouMatic-Style</b> Pulsators - <b>Remanufactured</b></li> </ul>			<p align="right">\$ <b>8,522</b></p>
					<p align="right">Page 3 of 16</p>


Qty	Units	Description			Cost to End-user
24	Stalls	<p align="center"><b>Pulsation System - New!</b></p> <ul style="list-style-type: none"> <li>- 3" PVC Pulsation line with hoses, fittings &amp; wiring harness</li> <li>- 3" PVC FreshAir line with fittings &amp; hoses</li> <li>- (4) FreshAir Filters</li> <li>- 3" PVC Cross-Over in front &amp; back to be supplied locally</li> </ul>			\$ 1,886
3	Units	<p align="center"><b>16-Unit Pulsation Controllers (Excalibur) - New!</b></p> <p><i>Controllers will be installed as part of Modules - Electrician provides 120 volt receptacle nearby - bid separately!</i></p>			\$ 3,750
		<p align="center"><i>3rd Controller prewired with plugs for instant change-over. No tools required.</i></p>			
					

# HERITAGE

## CIP-Receiver Combination Group



<b>0</b>	<b>Stall Equiv.</b>	<p>This group combines the traditional Receiver Group and the CIP System into a single pre-assembled aggregate - pre-plumbed, pre-wired and palletized</p>			\$ -
		<p>26" diam. x 24/34" Receiver - which is also the Wash Vat for the CIP Cycle (Nominal Capacity of 80 gl. - Dbl. 10 estimated to use 45 or 55 gl/fill)</p>			
		<p><b>System uses very small amount of water for a dbl. 12 - therefore less detergent, less acid, less energy to heat the water, less waste water</b></p>			
		- AW-style Moisture Trap with 3" Vacuum inlet & 3" U-bend			
		<ul style="list-style-type: none"> <li>'- (1) 4" x 33" Sock Milk Filters with 1 1/2" side outlet</li> <li>- 1 1/2 hp Milk Pump</li> <li>- Variable Speed Controller for Milk Pump (Frequency Controller)</li> </ul>			
		<ul style="list-style-type: none"> <li>- (2) LLC Probes for milk and water levels</li> <li>- 1 1/4" Input Group with hot and cold water valves + (3) chemical inputs</li> </ul>			
		<p><i><b>Water supply lines to Omal valves should be at least 1 1/4" diameter - Receiver will fill in 60 to 75 seconds</b></i></p>			
		<p><b>- 1 1/2" Ball check valve with air blow-out for rest milk</b></p>			
		<ul style="list-style-type: none"> <li>'- <b>HERITAGE C-12.5 Pipe Line Washer</b> with (3) peristaltic chemical pumps</li> <li>- All MAC Interface Valves and Relays</li> </ul>			
		<p><i><b>Electrician supplies:</b></i></p> <ul style="list-style-type: none"> <li>- 220 Volt, _____single or - _____three phase to this Group</li> </ul>			
		<p><i><b>Plumber s upplies:</b></i></p> <ul style="list-style-type: none"> <li>- Hot &amp; Cold water to the input group</li> <li>- Cold Water to the Plate Cooler</li> </ul>			
<b>0</b>	<b>Unit</b>	<b>4,500 lbs/hr Dual Pass Plate Cooler</b>			\$ -
		<b>Stand-By Variable speed copntroller and Milk Pump</b>			
					Page 5 of 16



<i>Qty</i>	<i>Units</i>	<i>Description</i>			<i>Cost to End-user</i>
24	stalls	<p style="text-align: center;"><b>3" Pipeline - Remanufactured</b></p> <p>Single Loop, double slope Lo-line, with nipples, fittings, all clamps, gaskets and brackets.</p>			\$ 2,571
					
24	Stalls	<p style="text-align: center;"><b>(2) 2" CIP Line - New!</b></p> <p>- with nipples, fittings, all clamps, gaskets &amp; brackets - From Vertical Wash Sink to each side of parlor to dead end</p>			\$ 1,886
80	ft	<p style="text-align: center;"><b>2" Discharge line - New</b></p> <p>from Receiver Group to Milk Tank (Bottom Loading) and to CIP Tank</p>			\$ 1,714
1	Unit	<p style="text-align: center;"><b>Safety Switch at Milk Tank - New!</b></p> <p>Heritage washer will not go to Wash Mode unless discharge line is disconnected from Tank</p>			Page 7 of 16 \$ 513




<i>Qty</i>	<i>Units</i>	<i>Description</i>			<i>Cost to End-user</i>
0	Group	<p align="center"><b>Compressed Air System - New!</b>            - (1) 7.5 hp SpeedAir Compressor, 80 gl. Vertical Tank and Twin Tower Drier set to -10 dgr</p>			\$ -
1	Group	<p align="center"><b>10 hp SpeedAir Compressor - New!</b>            with Twin Tower Drier and 80 gl stand-alone vertical Tank</p>			\$ 6,857
		<i>Electrician provides 220V to this group ___single or ___3 Phase?</i>			
1	Group	<p align="center"><b>Small Air Prep Group - New!</b>            including Pre-Filter, Regulator, Coalescing Filter, Shut-off Valve,            1/2" Copper to all stations of parlor, etc.</p>			\$ 1,214



<i>Qty</i>	<i>Units</i>	<i>Description</i>		<i>Cost to End-user</i>
1	Unit	<b>10 Hp Vacuum System with Lobe-Style Pump - Remanufactured</b> Sutor-Built Lobe-style Blower Pump		\$ 6,857
1	Unit	Frequency Controller/Variable Speed Drive - <b>New!</b>		\$ 4,350
1	Group	<i>6" PVC Header Lines with 3" lines and fittings to Pulsation lines and Receiver Group, incl. Pre-Filter, Check Valve, Test Port; Safety Valve, Drains, etc.</i>		\$ 1,071
		<i>Electrician provides 220 volt single phase to this Group - Bid separately! ___single or ___3 phase?</i>		
				
		<p><b>Customer provides own Stand-by Vacuum Pump</b></p> <p>TechForAg moves this pump into Machine Room and provides 3" PVC to connect it into the 6" Header lines - included in price</p>		
				Page 9 of 16



<i>Qty</i>	<i>Units</i>	<i>Description</i>		<i>Cost to End-user</i>
1	Pcs	<b>Double Compartment Sink - New!</b>		\$ 643
1	Group	<b>Accessories Group - New!</b> Hand Wash Sink, Filter Sock Holder with (1) box of Filters, SST paper towel holder, SST soap dispenser, etc.		\$ 536
150	ft	<b>(2) 60 ft long + (1) 30 ft long 1" Wash-Down Hose, New!</b> with Fire-Hose Nozzles		\$ 1,071
0	Units	<b>Air-Powered, all-stainless Hose Reel for the (3) Wash-Down Hoses</b>		\$ -
0	squ ft	<b>Pit Mats for 8 ft wide x 35 ft long pit floor Color of your choice - Blue or green</b>		\$ -

<i>Qty</i>	<i>Units</i>	<i>Description</i>			<i>Cost to End-user</i>
1	Unit	<p align="center"><b>Stainless Stairs</b></p> 			\$ 975
0	Unit	<ul style="list-style-type: none"> <li>- Made from Customer's 3" PipeLine Tubing</li> <li>- 8 ft + 3 ft long, with</li> <li>- (2) Horizontals and</li> <li>- (4) 3 ft Verticals</li> </ul>			\$ -
					

<i>Qty</i>	<i>Units</i>	<i>Description</i>			<i>Cost to End-user</i>
2	Units	<p align="center"><b>Modular Platforms for 12 stalls each - <i>Stainless</i></b></p> <p>The structural bases of the Modules; Height of your concrete cow platform should be 34" - if you are comfortable with a 38" working height.</p> <p><b>To be discussed!</b></p>			\$ 5,143
					
					
					Page 13 of 16

## Summary Page

		<b>Sub-Total Materials</b>		\$ <b>130,759</b>
		<b>Pre-Installation Labor and Supplies</b> provided by TechForAg at it's factory to convert the above materials into a <i>Ready-To-Milk</i> Modular Parlor; <i>Calculated at 10% of Cost of Materials</i>		\$ <b>13,076</b>
		<b>Less 15% Dairy Direct Discount</b>		\$ <b>(19,614)</b>
2	Trucks	<b>Freight (Only in the State of Wisconsin) - @ \$750/truck</b>		\$ <b>1,500</b>
		<b>On-Site Installation Labor &amp; Materials &amp; Supplies for (2) Installers @12 days @ 12 hrs @ \$75/hr</b>		\$ <b>21,600</b>
		1) Two Technicians time and expenses - Estimated at 10 working days		
		2) Misc. Installation Materials		
		<b>Grand Total Parlor with Freight &amp; Installation</b>		\$ <b>147,321</b>
		<b>Cost per Individual Stall</b>		\$ <b>6,138</b>

***Terms - I***

*If production at TFA starts several months in the future*

**1) 15% down at signing of contract**

**2) 35% on start of production**

**3) 45% on delivery of parlor to the dairy**

**4) 5% on Start-Up of Milking**

***Terms - II***

*If production at TFA starts more or less immediately*

**1) 35% at signing of contract, plus**

**2) 60% on delivery of parlor to the dairy**

**3) 5% on Start-Up of Milking**