

## A TechForAg 'Ready-To-Milk' Modular Parlor

**Model: Dbl. 24 ProTime II HerringBone - 45"**

**Key Features: Rapid Exit - Automatic Indexing - Partially Galvanized**

**Preliminary Proposal For: WS # 202 - # 022621 - 1 (Kent Miller)**



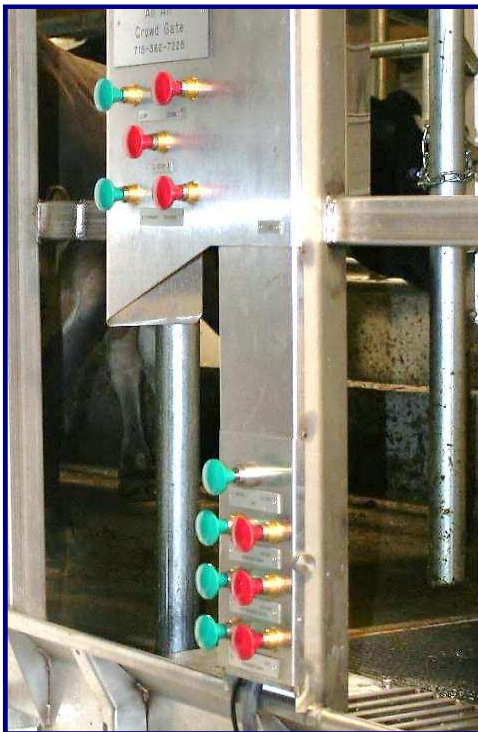
<i>Qty</i>	<i>Units</i>	<i>Description</i>			<i>Cost to End-user</i>
		<b>HERITAGE ProTime II Stalls - Remanufactured</b> - All stainless RumpRails/Butt Plates; 45" spacing - (2) 12-Stall Independent Brisket Bars per Side - (6) Brisker Bar Support Posts per Side - Galvanized - <b>Rapid Exit</b> Germania Brisket Bar - Galvanized - Auto-Indexing w/(12) 3" x 10" stainless Cylinders - (4) Galvanized Entrance and Exit Gates - No Meters			
48	Stalls				\$ 35,112



**Brisket Bar indexed; Swingarm  
 in the back shown at an angle  
 toward the cows at may be 4".  
 10" are available**



<i>Qty</i>	<i>Units</i>	<i>Description</i>			<i>Cost to End-user</i>
<b>1</b>	Group	<b>Automated Cow Traffic Controls</b> - (6x2) 3" x 10" stainless Cylinders for Indexing - (2x2) 3" x 10" stainless Cylinders for Entrance & Exit Gates - Rapid Exit; Brisket Bar Up - Down - Main Control Panel with (7) Control Buttons - Remote Control Panel in front to reduce walking			<b><i>Included in Cost of Stalls</i></b>
<b><i>All-stainless TechForAg cylinders are easy to service. Just remove (4) bolts....</i></b>					



**(2) Cow Traffic Controls at last stalls on either side of parlor. Plus (2) remote panels in front.  
 5-Button Crowd Gate controls on one side only. Stainless cylinders operate Entrance Gates & Automatic Indexing. Manual Exit Gates.**

<i>Qty</i>	<i>Units</i>	<i>Description</i>			<i>Cost to End-user</i>
0	Stalls	<b>Stainless Curbing, Gutter and Grates</b> <i>All Stainless; All-in One Welded Structure</i>			\$ -



**All-stainless Gutter and Grates -  
A Heritage exclusive!**

Stainless Gutter, Curbing and Grates are one welded unit. For utmost Cow Comfort we chose 3/4" x 3/4" bars, the widest in the industry, bar none.



48	Stalls	<b>Stainless Curbing, but <i>no</i> Gutters and Grates - New!</b>			\$ 15,429
0	Units	<b>15" x 10 ft x <i>11 ga</i> Cross-Over Channels - New!</b> ...one at either end of pit			\$ -
48	Stalls	<b>DeckFlush - New!</b> Cleans the Deck at each cow position as she leaves.			\$ 5,829



Qty	Units	Description		Cost to End-user
0	Units	<p align="center"><b>Air Powered CIP Cup Holders</b>            Single push button operated - "Now you see them - then you don't"            Match Jetter Cups to Inflation - <i>Brand &amp; Model #</i> _____</p>		<p align="center"><i>Air Powered CIP Cup Holders are not available for PT-II Stalls</i></p>



*New Style CIP Cup Holders - Optionally Available. No more rubber cups to buy*



0	Units	<p align="center"><b>Fold-Up CIP Cup Holders - <i>New!</i></b>            (Similar to ProTime I, but manually operated)</p>		<p align="center">\$ -</p>
---	-------	---	--	----------------------------

48	Units	<p align="center"><b>Traditional CIP Cup Holders - <i>New!</i></b>            (Slide Rubber Cups into a stainless Rack)</p>		<p align="center">\$ 1,714</p>
----	-------	---	--	--------------------------------

Qty	Units	Description		Cost to End-user
1	34ft x 120 ft	<p align="center"><b>HERITAGE - New!</b></p> <p align="center"><b>Heavy Duty All-Air Operated Crowd Gate with Automatic Manure Scraper</b></p> <p>Various other gates are <i>Optionally Available</i></p>		\$ 35,675
250	ft	<p align="center"><b>C-4 x 6.5 lbs Crowd Gate Channel - New!</b> (Hot-dip galvanized)</p>		\$ 3,929



For more information go to [www.techforag.com/WhyCrowdGates](http://www.techforag.com/WhyCrowdGates)



<i>Qty</i>	<i>Units</i>	<i>Description</i>			<i>Cost to End-user</i>
48	Units	<p align="center"><b>Original Germania Legacy 9000 ArmTakeOffs - Remanufactured</b></p> <p align="center">All-Air Controls, All-stainless, with spring-loaded clutch for arm</p>		\$	81,943





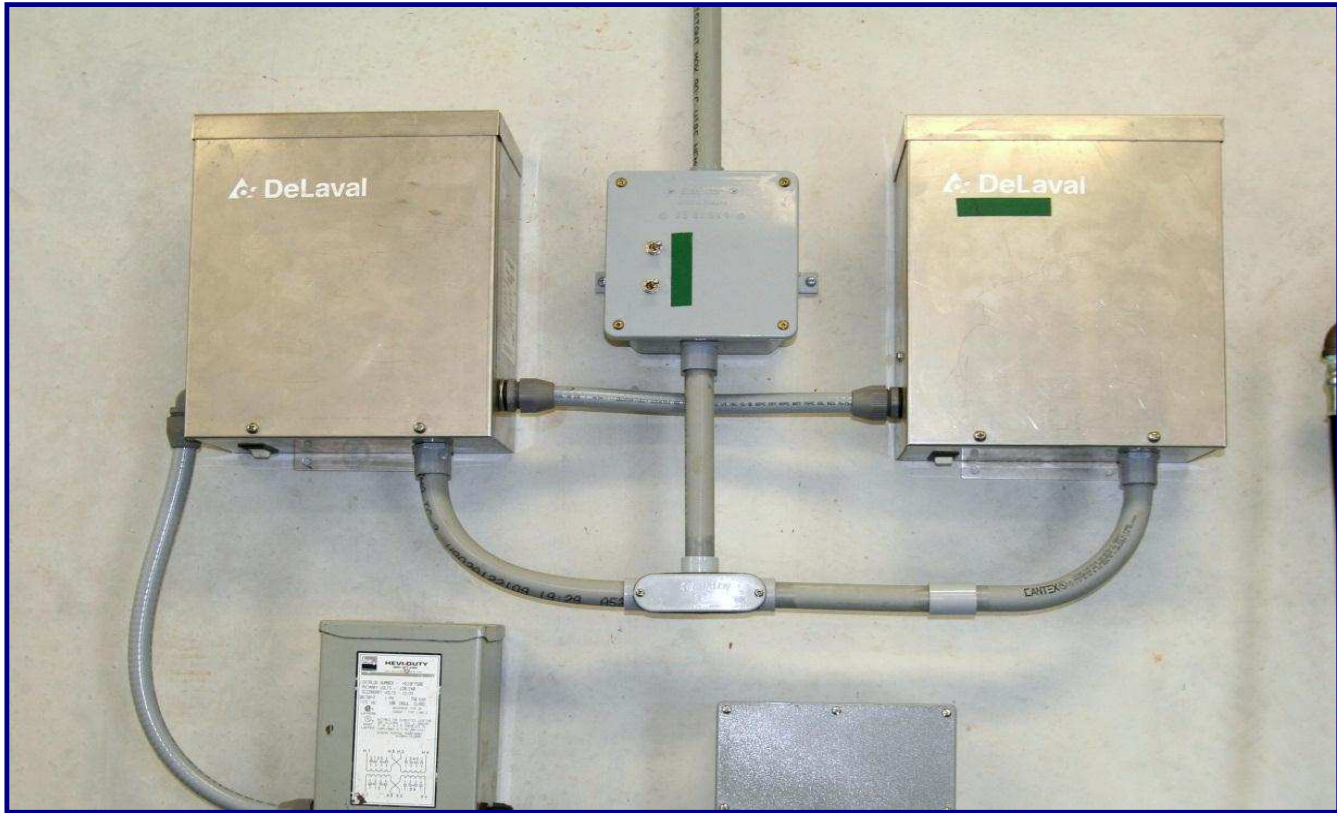
<i>Qty</i>	<i>Units</i>	<i>Description</i>			<i>Cost to End-user</i>
		<p><b>Original Germania Top Outlet Claw-Clusters - Remanufactured but with all-New Rubber Goods</b></p> <ul style="list-style-type: none"> <li>- Air Forks</li> <li>- 06 Shells</li> <li>- Milk Hose</li> <li>- Pulsation Hose</li> <li>- Short air tubes</li> <li>- Liners</li> <li>- Boumatic Pulsators</li> </ul>			
48	Units				\$ 19,543
		<p><b><i>New Feature</i></b></p> <p><b><i>- Rubber Goods upgraded to All-Silicon - (Except inflations)</i></b></p>			



**HERITAGE** Top Outlet Claw hangs well balanced on the arm for milking and equally so in the rest position.



<i>Qty</i>	<i>Units</i>	<i>Description</i>			<i>Cost to End-user</i>
		<b>Pulsation System - <span style="color: red;">New!</span></b>			
<b>48</b>	<b>Stalls</b>	<ul style="list-style-type: none"> <li>- 3" PVC Pulsation line with hoses, fittings &amp; wiring harness</li> <li>- 3" PVC FreshAir line with fittings &amp; hoses</li> <li>- (4) FreshAir Filters</li> <li>- (2) 3" PVC Cross-Overs in front &amp; back</li> </ul>			\$ <b>4,457</b>
		<b>16-Unit Excalibur Pulsation Controller</b>			
		<span style="color: red;">New!</span>			
<b>4</b>	<b>Units</b>	<i>Electrician provides 120 volt receptacle nearby - bid separately!</i>			\$ <b>3,994</b>



<i>Qty</i>	<i>Units</i>	<i>Description</i>			<i>Cost to End-user</i>
<b>HERITAGE</b> <b>CIP-Receiver Combination Group - New!</b>					
0	Stall Equip.	This group combines the traditional Receiver Group and the CIP System into a single pre-assembled aggregate - pre-plumbed, pre-wired and			\$ -
		30" diam. x 24/34" Receiver - which is also the Wash Vat for the CIP Cycle			
		- AW-style Moisture Trap with 4" Vac inlet & 4" U-bend			
		'- (2) 4" x 33" Sock Milk Filters with 1 1/2" side outlet and (2) Butterfly Valves - (2) 3- hp Fristam Milk Pumps, one for stand-by			
		- (2) LLC Probes for milk and water levels - 1 1/4" Input Group with hot and cold water valves + (3) chemical inputs			
		<i>Water supply lines to Omal valves should be at least 1 1/4" diameter. Otherwise takes too long to fill receiver</i>			
		<i>- 2" Ball check valve with air blow-out for rest milk</i>			
		'- <b>HERITAGE C-12.5 Pipe Line Washer</b> with (3) peristaltic chemical pumps			
		<i>Electrician supplies:</i> <i>- 220 Volt, __X__single phase to this Group</i>			
		<i>Plumber supplies:</i> <i>- Hot &amp; Cold water to the input group</i> <i>- Cold Water to the Plate Cooler</i>			
		<i>Includes Stand-by Milk Pump with pre-wired Twist-Lock Plugs</i>			
		<i>Also a Stand-by Variable Speed Controller, prewired as well</i>			
0	Unit	<b>6,000 lbs/hr Dual Pass Plate Cooler</b>			\$ -
		(Modify Group for AWs?)			Page 10 of 31



## HERITAGE CIP-Receiver Combination Groups



Model 1500 installed at Steve Paul's new dairy Whitewater, WI. November 2009; Dbl. 10 PT-I Expandable to dbl. 16

*Receiver has (4) 3" inlets. Group to be installed in Milk House, with Milk House located at the top of the Holding Pen, on either the left or right side of the parlor. 3" lines from one side of parlor will cross over in back of parlor.*

For details on **HERITAGE** CIP Receiver Combination Groups got to  
[http://www.techforag.com/CIPReceiverGroup/CIP\\_Receiver\\_Group2010.pdf](http://www.techforag.com/CIPReceiverGroup/CIP_Receiver_Group2010.pdf)

<i>Qty</i>	<i>Units</i>	<i>Description</i>			<i>Cost to End-user</i>
2	Group	<b>Traditional Receiver Group - Remanufactured, incl.</b> 26" Receiver, 3hp Milk Pumps with Dog House, 4 7/8" x 33" Filter, Moisture Trap & U-Bend, Flapper Valve, LL Probes & Controller, Short Plug - Long Plug, Air Blow Valve, etc.			\$ 12,857



0	Unit	<b>2 hp LC Thompson MilkPump - New!</b> <b>220V - single or 3-Phase?</b>			\$ -
1	Group	<b>Automatic CIP System - Remanufactured</b> (120 gl Vertical Wash Sink, Water Level Sensor, Hot & Cold Water Valve, Heritage PipeLine Washer - <b>New!</b> (3) Peristaltic pumps for chemicals - <b>New!</b> (1) Air Injector installed at the Receiver Groups 2" x 2" Divert/3-Way Valve at sink, Automatic Drains			\$ 12,143
0	Unit	<b>2 hp LC Thompson Pressure Wash Pump - New!</b>			\$ -



<i>Qty</i>	<i>Units</i>	<i>Description</i>			<i>Cost to End-user</i>
48	Stalls	<p align="center"><b>240 ft of 3" Lo- Lines - Partially New!</b>  <b>Partially Remanufactured</b></p> <p><b>Double slope - single loop @ 2% slope</b>, with nipples, fittings, all clamps, gaskets and brackets. Line slopes toward HoldPen            (We would only install the straight line for the 24 stalls)</p>			\$ 4,457
48	Stalls	<p align="center"><b>2" CIP Line - Remanufactured</b></p> <p>- with nipples, fittings, all clamps, gaskets &amp; brackets.            - Both lines will be dead-ended at back of parlor</p>			\$ 3,086
80	ft	<p align="center"><b>2" Discharge line - New!</b></p> <p>from CIP-Receiver Group to Milk Tank (Bottom Loading) and back to CIP Rec Group; incl. Safety Switch at Tank</p>			\$ 2,857

<i>Qty</i>	<i>Units</i>	<i>Description</i>			<i>Cost to End-user</i>
1	Group	<b>Compressed Air System - New!</b> - (1) 7.5 hp Quincy Screw Compressors Compressor - (1) 7.5 hp Quincy Vertical Compressor for Stand-By - With Twin Tower Drier, dries air to minus 10 dgr			\$ 16,786
1	Group	80 gl Tank, Filters, Drains, Copper Lines to all stations of Parlor, etc.			\$ 2,143
		<i>Electrician provides 220V to this group ___single or ___3 Phase?</i>			



*(2) 7.5 hp Compressors*



*Twin Tower Drier dries air to minus 10 dgr*



<i>Qty</i>	<i>Units</i>	<i>Description</i>		<i>Cost to End-user</i>
1	Group	<b>(2) 20 Hp Vacuum System with Lobe-Style Pump - New!</b> Sutor-Built Lobe-style Blower Pump, preassembled for instant installation - 2nd pump for StandBy		\$ 13,571
1	Unit	<b>20 unit Frequency Controller/Variable Speed Drive - New!</b>		\$ 4,571
1	Group	<i>6" PVC Header Lines with 3" lines to Pulsation and Receiver Group; Also includes Pre-Filter, Check Valve, Test Port, Safety Valve, Slide Valve, Drains.</i>		\$ 1,214
1	Unit	<b>Sentinel Model 560 Vacuum Regulator - New!</b>		\$ 1,143
		<i>Electrician provides 220 volt to this Group - Bid separately! ___single or ___3 phase?</i>		



<i>Qty</i>	<i>Units</i>	<i>Description</i>			<i>Cost to End-user</i>
0	sqft	<b>Stainless Covering for Pit Wall and/or Parlor Walls</b> 4 ft x 10 ft x 16 ga sheets, # 4 polish			\$ -





<i>Qty</i>	<i>Units</i>	<i>Description</i>			<i>Cost to End-user</i>
0	Units	<p align="center"><b>4 ft x 4 ft stainless Divert Gate</b>  <b>Built from 2 1/2 x 2 1/2 x 11 ga square tubing</b>  <b>Divert exiting cows into a catch pen.</b></p>			\$ -
0	Group	<p align="center"><b>Cylinders for the Divert Gates</b></p> <p>3" x 14" Stainless cylinders w/EV-125 Quick Exhaust Valves  (4) Versa 'Open' &amp; 'Close' Push Buttons</p>			\$ -



<i>Qty</i>	<i>Units</i>	<i>Description</i>		<i>Cost to End-user</i>
		<b>On-Farm Spare Parts Kit</b> <b>(Contains only new parts)</b>		
1	Group	Includes all essential parts for at least (1) year of operation, (2) retract cylinder, at least (2) of each air valves, an extra LLC, seal kits for the milk pump, (2) PC Boards for the Pipe Line Washer, (2) extra Pulsator, an extra Claw Cluster Assy', etc.		\$ 7,143

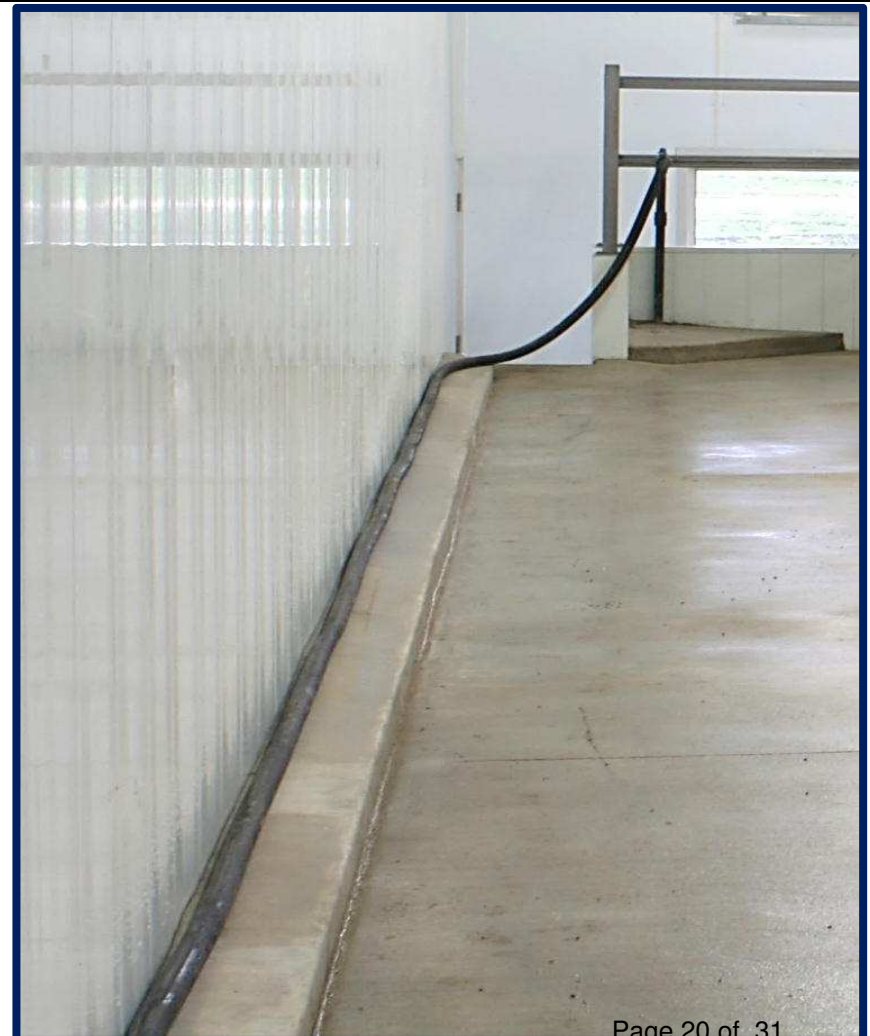




<i>Qty</i>	<i>Units</i>	<i>Description</i>			<i>Cost to End-user</i>
1	Pcs	<b>Double Compartment Sink - New!</b>			\$ 786
1	Group	<b>Accessories Group - New!</b> Hand Wash Sink, Filter Sock Holder with (1) box of Filters, SST paper towel holder, SST soap dispenser, etc.			\$ 536

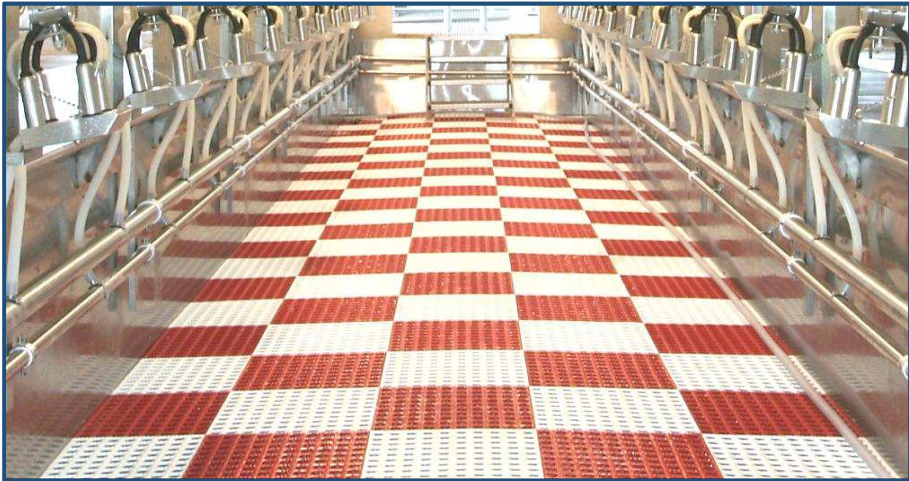


<i>Qty</i>	<i>Units</i>	<i>Description</i>			<i>Cost to End-user</i>
1	Group	(1) 35 ft long 1" Wash-Down Hose for the pit with original Brass Fire-Hose Nozzles			\$ 226
1	Group	(2) 80 ft long 1" Wash-Down Hoses for the Cow Platforms with original Brass Fire-Hose Nozzles			\$ 440
0	Units	Air-Powered, all-stainless Hose Reel for the (3) Wash-Down Hoses			\$ -





<i>Qty</i>	<i>Units</i>	<i>Description</i>			<i>Cost to End-user</i>
0	sqft	<b>Pit Mats for the Milkers - What Colors?</b>			\$ -





<i>Qty</i>	<i>Units</i>	<i>Description</i>			<i>Cost to End-user</i>
1	Unit	<p align="center"><b>Stainless Pit Steps - New!</b>  from parlor into Holding Pen; 4 steps, 36" wide, 8" riser  with SST Handrail .</p>		\$	1,214





<i>Qty</i>	<i>Units</i>	<i>Description</i>			<i>Cost to End-user</i>
16	Sets	<p><b>Lights for the Milker Pit - <i>New!</i></b>            Basically a set of (2) stainless brackets to mount one 96" LED Light Fixtures in the Overhead Channel</p>			\$ 1,097
		<i>96" LED Light Fixtures must be vapor tight and 100% corrosion resistant</i>			
		<p><i>We install the brackets on site;</i>  <i>Electrician supplies and installs the fixtures</i></p>			
		<i>This parlor needs (8) 8 ft fixtures per side</i>			



<i>Qty</i>	<i>Units</i>	<i>Description</i>			<i>Cost to End-user</i>
0	Units	<p align="center"><b>AccuWeigh Milk Measuring System</b>  <b>Remanufactured</b>            (Change Low-Line and Receiver Group!)</p>			\$ -



		<p align="center"><b>Germania Accuweigh 90 or 65</b></p> <ul style="list-style-type: none"> <li>- Hold all of the milk for quick check before letting the cows go</li> <li>- Drain and re-vacuumize automatically when cows leave</li> <li>- Provide great vacuum reserve right next to the cow</li> </ul>			
0	Group	<p align="center">AW Control Boxes            Turbo Controller, _____Extra VacShutOff Valves, etc.</p>			\$ -
0	Units	<p align="center"><b>Butter Fat Testers</b></p>			\$ -



<i>Qty</i>	<i>Units</i>	<i>Description</i>			<i>Cost to End-user</i>
0	Unit	<b>Stainless Breezeway Fences with 3ft 'Side Wing'</b>			\$ -



0	ft	<b>Stainless Cap for Breezeway Wall</b>			\$ -
---	----	---	--	--	------





<i>Qty</i>	<i>Units</i>	<i>Description</i>			<i>Cost to End-user</i>
48	Stalls	1" Kraiburn Rubber Mats (Made in Germany) - <b>New!</b> For the Cow Platforms			\$ 8,533





<i>Qty</i>	<i>Units</i>	<i>Description</i>			<i>Cost to End-user</i>
		<p><b>(4) Modular Platforms for 12-stalls each</b>  <b><i>Stainless- New!</i></b>            The structural bases of the Modules; Height of your concrete cow platform should be 34" - if you are comfortable with a 38" working height - <b>To be discussed!</b></p>			
4	Group				\$ 11,429



We build our parlor modules on platforms, a frame work made form 2" x 4" stainless tubing and usually 53" wide x 50 ft long for the typical dbl. 12. Normally, we slide the Modules into place on this steel frame work, pushed by a Skid Loader.

## Summary Page

		<b>Sub-Total Materials</b>		\$ 313,857
		<b>Less 15% Dairy-Direct Discount</b>		\$ (47,079)
		<b>Cost of Sub-Total Materials after DDD</b>		\$ 266,778
		<b>Pre-installation Labor at our factory to assemble 'Sub-Total Materials' into (4) 12-Stall Modules at 10%</b>		\$ 31,386
4	Trucks	<i>Estimated</i> Freight @ \$4.75/mile for 150 miles each (only within the State of Wisconsin)		\$ 2,250
		<b>Engineering charges for nesting the two Modules</b>		\$ 500
		<b>On-Site Installation Labor, Supplies &amp; Expenses</b> Covers several items:		
		1. Time for (2) Technicians (20) days @ 12 hrs average @ \$75 hr		\$ 36,000
		2. Time value of Technicians while travelling: (3) daily round trips @ 4 hrs @ \$35/hr		\$ -
		3. Travel Expenses: (3) Plane tickets + local transportation +Motels + Meals & Misc.		\$ -
		5. Rebate to Customer of \$1,000 for prompt payment of last installment		
		6. Warranty work & follow-up visits		
		<b>Grand Total I</b> <b>Parlor with Freight &amp; Installation</b>		\$ 336,914
		<b>Per Stall</b>		\$ 7,019
				Page 28 of 31



## ***Terms - I***

***If production at TFA starts several months in the future***

- 1) 15% down at signing of contract**
- 2) 25% on start of production**
- 3) 55% on delivery of parlor to the dairy**
- 4) 5% On start-up of milking**
- 5) \$1,000 Rebate for prompt payment**

## ***Terms - II***

***If production at TFA starts more or less immediately***

- 1) 35% at signing of contract, plus**
- 2) 60% on delivery of parlor to the dairy**
- 3) 5% on Start-up of Milking**
- 4) \$1,000 Rebate for prompt payment**

## ***Please Note***

**18 Months warranty on all materials. Does not apply to the Compressed Air Group and the Vacuum Group, for which we pass on the manufacturer's warranty  
Warranty starts *after* parlor has been paid for in full**