

Excess Inventory

To order contact Kim @ 715-360-8002 or Rolf @ 715-360-3660

(Rev. 06-27-2018)

Description	New	Used	Illustration	Your Cost
-------------	-----	------	--------------	-----------

Vacuum Pumps

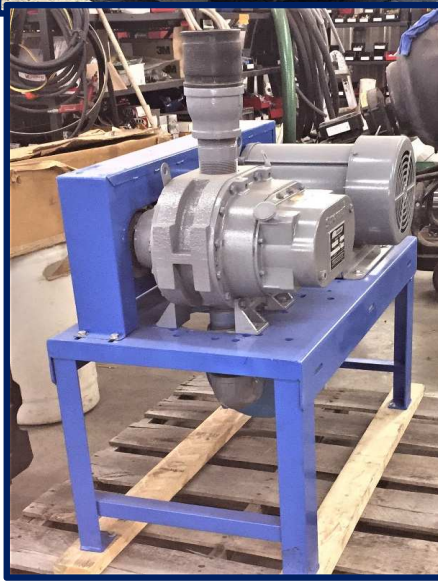
<p>Remanufactured Pump Assy' # 2-SB-1 10 hp SutorBilt Lobe Style Year 1972 Serial # S214285 Motor Pulley Diam.??? Pump Pulley Diam.??? 10 hp Leeson Motor 1760 RPM 208/230/460 V 3 ph 27/25/12.5 Amps Tested 60 CFM @15" Hg</p> <p>New Silencer included but not shown</p> <p>PM Service - Changed gear Oil</p>	X		<p>\$1,815 OBO</p>
<p>Remanufactured Pump Assy' # 3-SB-2 10 hp SutorBilt Lobe Style Year 1972 Serial # S 317530 Motor Pulley Diam. ____" Pump Pulley Diam. ____" 10 hp Leeson Motor 1760 RPM 208/230/460 V 3 ph 27/25/12.5 Amps Tested 65 CFM @15" Hg</p> <p>PM Service: Changed gear oil</p>	X		<p>\$1,815 OBO</p>

Remanufactured
 Pump Assy' # 8-SB-3
 Model # GAEHDP
 Serial # S159566
 Sutorbilt Lobe Style
 Year 1972

10 hp Dayton Farm Motor
 Serial # S 317530
 Motor Pulley Diam. ____"
 Pump Pulley Diam. ____"
 Model # 3N341 C
 1755 RPM
 230/460 V 3 ph
 25.2/12.6 Amps
 Tested 65 CFM @15" Hg

PM Service: Changed gear
 oil

X



\$1,815
 OBO

Brand New Pump
 Pump Assy # 4-RW 1
 15 Hp RoKa / Walker
 Model # 1500
 With extra large silencer
 and oil recirculation system
 Year 1997
 Vane Type
 Serial # N/A
 No Motor
 208/230/460V 3 Phase
 4" Inlet & Outlet
 Tested 150 CFM @ 15" Hg

X



\$1,150
 OBO

Brand New Pump
 Pump Assy # 5-RW 3
 15 Hp RoKa / Walker
 Model # 1500
 With extra large silencer
 and oil recirculation system
 Year 1997
 Vane Type
 Serial # N/A
 15 hp Century Motor
 200 V 43.4 A 1760 RPM
 Motor Pulley 6" Diam
 Pump Pulley 11 1/2"
 Can only be used with 208 V
 or less
 4" Inlet & Outlet
 Tested 170 CFM @ 15" Hg

X



\$ 1,450

Remanufactured
 Pump Assy' # 6-K1
 Kaeser Tri-Lobe
 Model Omega 41
 Serial # 1322
 Inlet 3" Outlet 3"
 15 Hp Baldor Motor
 1760 RPM
 208/230/460 V
 37.5/34/17 Amps
 Tested 125 CFM@ 15" Hg
 Includes new Silencer
 (not shown)

X



\$4,500
 OBO

Remanufactured
 Pump Assy' # 7-K2
 Kaeser Tri-Lobe
 Model Omega 42
 Serial # 429 / 8098
 Inlet 4" Outlet 4"
 15 Hp US Electrical Motor
 3450 RPM 208/230/460 V
 40/37/18.5 Amps
 Tested 175 CFM@ 15" Hg
 Muffler/Silencer shown
 underneath Base

X



Note:
 The Kaeser Omega 42 is a 20 Hp pump.
 This one only has a 15 Hp motor but
 running at 3450 RPM for whatever
 reason.

\$4,975
 OBO

Sentinel 350 Vacuum
 Regulator - **New!**



\$495

Sentinel Vacuum Regulator
 Mark II - **Reconditioned**

\$95