

A TechForAg 'Ready-To-Milk' Modular Parlor

Model: Dbl. 6 Surge Norbco Parallel

Prepared For: - Preliminary Proposal # 072718-1

<i>Qty</i>	<i>Units</i>	<i>Description</i>	<i>Cost to End-user</i>
12	Stalls	Dbl. 6 Norbco Heavy Duty Parallel Rapid Exit Auto Indexing with individual cow release	\$ 14,571
12	Groups	Automated Cow Traffic Controls each with (2) 3" x 10" stainless Cylinders for the Entrance & Exit Gates	Included with Stalls



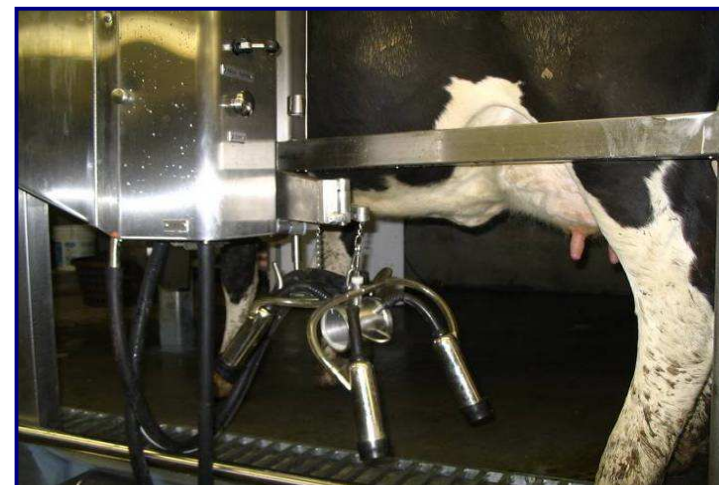
<i>Qty</i>	<i>Units</i>	<i>Description</i>			<i>Cost to End-user</i>
12	Units	Cow Traffic Control Boxes , with - (6) Versa Valves each for Entrance Gate open close and Rapid Exit open - close.			Included with Parlor
12	Units	Surge Omni No-Arm Detachers			\$ 3,429



Left : Germania Model SB Arm TakeOffs integrated into ProTime I Stalls. **Right:** Model SB added onto PT-II Stalls

<i>Qty</i>	<i>Units</i>	<i>Description</i>			<i>Cost to End-user</i>
12	Units	<p align="center">Westfalia 300 Claw-Clusters & Pulsation</p> <ul style="list-style-type: none"> - Air Forks - 06 Shells - 60" Milk Hose - 108" Pulsation Hose - Short air tubes - Liners of your choice: <i>Brand & Model</i> _____ - Westfalia Twi-Unit Pulsators 			\$ 3,806

*New Feature in 2009 -
- Rubber Goods upgraded to All-Silicon - (Except inflations)*



Germania's Top Outlet Claw hangs well balanced on the arm for milking and equally so in the rest position.


12	Stalls	<p align="center">PVC Pulsation System</p> <ul style="list-style-type: none"> - 3" PVC Pulsation line with hoses, fittings & wiring harness - 3" PVC FreshAir line with fittings & hoses - (2) FreshAir Filters - (2) 3" PVC Cross-Overs in front & back 			\$ 1,114
1	Units	<p>3 16-Unit Surge Pulsation Controller</p>			N/C

<i>Qty</i>	<i>Units</i>	<i>Description</i>		<i>Cost to End-user</i>
HERITAGE CIP-Receiver Combination Group - New!				
12	Stall Equiv.	This group combines the traditional Receiver Group and the CIP System into a single pre-assembled aggregate - pre-plumbed, pre-wired and		\$ 24,000
		24" diam. x 18/24" Receiver - which is also the Wash Vat for the CIP Cycle (Nominal Capacity of 50 gl. - Dbl. 6 estimated to use 40gl/fill)		
		- AW-style Moisture Trap with 3" Vac inlet & 3" U-bend		
		'- (1) 4" x 33" Sock Milk Filters with 1 1/2" side outlet - 1 1/2 hp Milk Pump - Variable Speed Controller for Milk Pump		
		- (2) LLC Probes for milk and water levels - Float type (Interchangeable with DeLaval Smooth Operator LLCs) - 3/4" Input Group with hot and cold water valves + (3) chemical inputs		
		<i>Water supply lines to Omal valves should be at least 3/4" diameter. Otherwise takes too long to fill receiver</i>		
		<i>- 1 1/2" Ball check valve with air blow-out for rest milk</i>		
		'- Heritage Model C-12.5 Pipe Line Washer with (3) peristaltic chemical pumps (Interchangeable with DeLaval pumps....) - All MAC Interface Valves and Relays		
		<i>Electrician supplies:</i> <i>- 220 Volt, _____single or - _____three phase to this Group</i>		
		<i>Plumber s supplies:</i> <i>- Hot & Cold water to the input group</i> <i>- Cold Water to the Plate Cooler</i>		
0	Unit	1,800 lbs/hr Plate Cooler		\$ -
		4		

HERITAGE CIP-Receiver Combination Groups





Heritage Model 1500 CIP Receiver Group to be installed at Steve Paul's dairy near Whitewater, WI



Qty	Units	Description			Cost to End-user
					
60	ft	<p align="center">3" Lo-Line</p>			\$ 2,500
60	ft	<p align="center">2" CIP Line</p> <ul style="list-style-type: none"> - with nipples, fittings, all clamps, gaskets & brackets. - Lines will be dead-ended at front of parlor - includes Sweep Y at Culvert 			\$ 1,543
80	ft	<p align="center">1 1/2" Discharge line</p> <p>from CIP-Receiver Group to Milk Tank (Bottom Loading) and back to CIP Rec. Group (Install Discharge Line to loading docks?)</p>			\$ 2,057

<i>Qty</i>	<i>Units</i>	<i>Description</i>			<i>Cost to End-user</i>
0	ft	(2) 15-ft Light-Duty Curb Extensions (These will become obsolete when you expand to dbl. 16)			\$ -
0	ft	(2) 8 ft Temporary Fences to keep cows from wandering around the front of the parlor			\$ -
1	Group	Compressed Air System - (1) 5 hp Orbitz Compressor - With Twin Tower Drier, dries air to minus 10 dgr (?) Pre-Filter, Coalescing Filter, Regulator,etc.			\$ 8,214
1	Unit	7.5 Hp Vacuum System with Lobe-Style Pump - New Sutor-Built Lobe-style Blower Pump			\$ 5,143
		Frequency Controller/Variable Speed Drive New			\$ 4,000

<i>Qty</i>	<i>Units</i>	<i>Description</i>			<i>Cost to End-user</i>
0	Groups	<p align="center">Divert Gate Actuators & Controls</p> <p>3" x 14" Stainless cylinders w/EV-125 Quick Exhaust Valves, Versa 'Open' & 'Close' Push Buttons</p>			\$ -
0	Units	<p align="center">4 ft x 4 ft stainless Divert Gate</p> <p>Built from 2 1/2 x 2 1/2 x 11 ga square tubing Divert exiting cows into a catch pen.</p>			\$ -
		<p align="center">On-Farm Spare Parts Kit</p> <p align="center">(Contains only new parts)</p> <p>Includes all essential parts for at least (1) year of operation (2) sensors, a retract cylinder, at least (1) of each air valves, an extra LLC, seal kit for the milk pump, PC Board for the PL Washer, several extra Pulsator, etc.</p>			\$ -
1	Pcs	Double Compartment Sink			\$ 450
0	Group	<p align="center">Accessories Group</p> <p>Hand Wash Sink, Filter Sock Holder with (1) box of Filters, SST paper towel holder, SST soap dispenser, etc.</p>			\$ 357
125	ft	(2) 50 ft long + (1) 25 ft long 1 1/4" Wash-Down Hose			\$ 536
0	Units	Air-Powered, all-stainless Hose Reel for the (3) Wash-Down Hoses			\$ -
0	squ ft	Pit Mats for 8 ft wide x 55 ft long pit floor Color of your choice - Blue or green			\$ -

<i>Qty</i>	<i>Units</i>	<i>Description</i>			<i>Cost to End-user</i>
1	Unit	<p style="text-align: center;">Stainless Pit Steps from parlor into Holding Pen; 4 steps, 36" wide, 8" riser</p>			\$ 857
					
9					

<i>Qty</i>	<i>Units</i>	<i>Description</i>		<i>Cost to End-user</i>
				
0	Units	<p align="center"> Main Entrance Gate 3 ft x 3 ft x 78" high Saloon Style Open and close from any stall Operated by 3" x 10" stainless Cylinder </p>		\$ -
0	Stalls	<p align="center">Rubber Mats for Cow Platforms</p>		\$ -

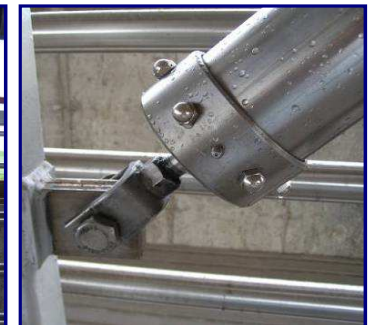
<i>Qty</i>	<i>Units</i>	<i>Description</i>			<i>Cost to End-user</i>
		 			
		<p>We build our parlor modules on platforms, a frame work made form 2" x 4" steel tubing and usually 53" wide x 50 ft long for the typical dbl. 12. Normally, we slide the Modules into place on this steel frame work, pushed by a Skid Loader.</p>			
		<p>Parlors up to dbl. 12 come as two Modules, left and right. Modular parlors offer a number of advantages to you, all of which affect your pocket book</p>			

Summary Page

		Sub-Total Materials			\$ 72,577
		Pre-Installation Labor and Supplies provided by TechForAg at it's factory to convert the above materials into a <i>Ready-To-Milk</i> Modular Parlor; Calculated at 10% of Cost of Materials			\$ 7,258
300	Miles	Estimted Freight - @ \$3.75/mile 1 truck for this project (only in the State of Wisc.)			\$ 1,125
		On-Site Installation Labor, Supplies & Expenses 12 days 2 Installers 12 hrs \$75			\$ 21,600
		Grand Total Parlor with Freight & Installation			\$ 102,560
		Per Station			\$ 8,547

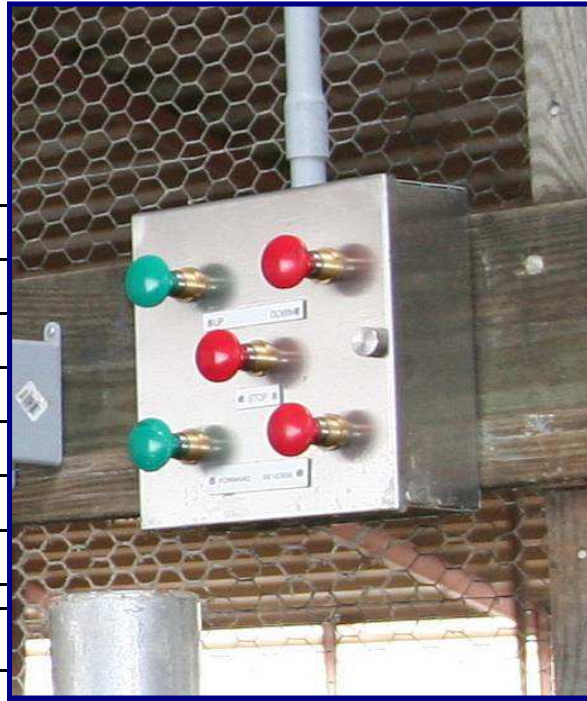
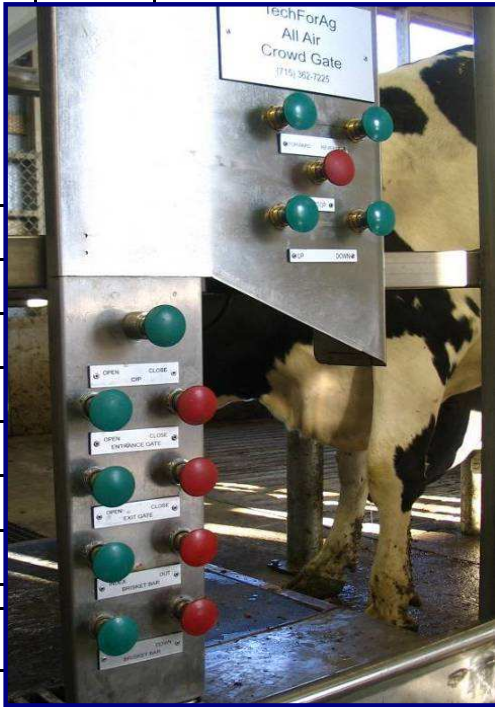
Optionally Available

1	19 ft x 40 ft	HERITAGE Heavy Duty, <i>All-Stainless</i>, All-Air Operated Crowd Gate With Automatic Manure Scraper	\$	22,950
90	ft	C-4 x 7.25 lbs Crowd Gate Channel Welds very straight over 6 ft Span/Distance between Vertical Posts - Does not require any other re-enforcement or support	\$	900



Heavy Duty, Germania-Style Crowd Gate; Air-Powered Gear Motor - no electric controls what-so-ever. Lifts anywhere in Holding Pen and returns overhead cows to rear of pen. Air Motor shuts off automatically, both on front and back.

Heritage Gates up to 29 ft wide come with 4" easy-to-service all-stainless cylinders



Left: Main Control station in back of parlor;
Center: Remote Controls in back of Holding Pen
Right: Two extra buttons in front of parlor to reduce walking

Terms - I

If production at TFA starts several months in the future

- 1) 15% down at signing of contract**
- 2) 25% on start of production**
- 3) 50% on delivery of parlor to the dairy**
- 4) \$1,000 Rebate for prompt payment**

Terms - II

If production at TFA starts more or less immediately

- 1) 35% at signing of contract, plus**
- 2) 65% on delivery of parlor to the dairy**
- 4) \$1,000 Rebate for prompt payment**